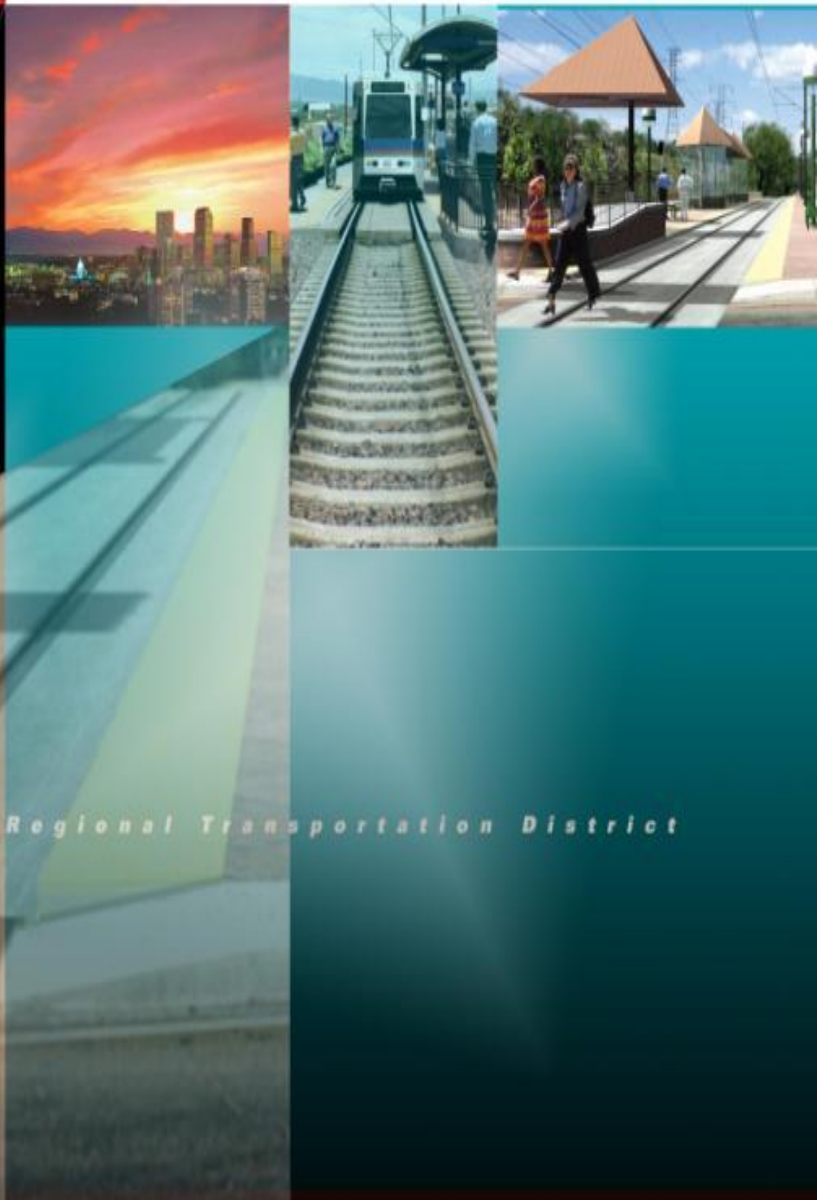




West Corridor LRT Project Progress Report



Regional Transportation District

TABLE OF CONTENTS

LIST OF ACRONYMS	ii
Overview.....	1
PROJECT MAP	2
Discipline Summary	3
Systems.....	3
Utilities.....	4
Drainage.....	6
ROW.....	7
Civil Construction.....	8
Structural Construction.....	9
Quality Assurance.....	10
Public Information.....	11
Risk Management.....	12
DBE	17
Cost.....	18
Schedule Summary	20

LIST OF ACRONYMS

CCD	City and County of Denver
CDOT	Colorado Department of Transportation
CEI	Cost Effectiveness Threshold
CMGC	Construction Manager/General Contractor
CNPA	Concurrent Non Project Activity
COL	City of Lakewood
CPUC	Colorado Public Utilities Commission
CPV	Central Platte Valley
CSP	Construction Safety Program
DEA	David Evans and Associates
DBE/SBE	Disadvantaged Business Enterprise/Small Business Enterprise
DTCG	Denver Transit Construction Group
EA	Environmental Assessment
EOL	End of Line
FD	Final Design
FDC	Final Design Consultant
FFGA	Full-Funding Grant Agreement
FONSI	Finding of No Significant Impact
FRA	Federal Railroad Administration
FRSC	Front Range Systems Consultant
FTA	Federal Transit Administration
GMP	Guaranteed Maximum Price
GSA	Governmental Services Administration
IGA	Inter-governmental Agreement
LONP	Letter of No Prejudice
LRT	Light Rail Transit
LRV	Light Rail Vehicle
NFPA	National Fire Prevention Association
NTP	Notice to Proceed
OCS	Overhead Catenary System
PE	Preliminary Engineering
PI	Public Involvement
PIC	Public Information Consultant
PSC	Program Support Consultant
PMOC	Project Management Oversight Contractor
PMP	Project Management Plan
PPI	Public-Private Initiative
QA/QC	Quality Assurance / Quality Control
QMC	Quality Management Consultant
QMO	Quality Management Oversight
QMP	Quality Management Plan
QPRM	Quarterly Progress Review Meeting

LIST OF ACRONYMS (Cont.)

RA	Risk Assessment
RAMP	Real Estate Acquisition and Management Plan
RFQ	Request for Qualifications
RFP	Request for Proposals
RFMP	Rail Fleet Management Plan
ROD	Record of Decision
ROW	Right of Way
RTD	Regional Transportation District
SCC	Standard Cost Categories
SCP	Safety Certification Program
SSOA	State Safety Oversight Agency
SSMP	System Safety Management Plan
SSPP	System Safety Program Plan
SSPS	System Safety Program Standards
SSWG	System Safety Working Group
TEM	Technical Evaluation Memorandum
TOD	Transit Orientated Development
T-REX	Transportation Expansion Project
UDFCD	Urban Drainage Flood Control District
VE	Value Engineering
WBS	Work Breakdown Structure

MONTHLY OVERVIEW

During October, the West Corridor FasTracks Project continued to progress on schedule and within budget.

Noteworthy Accomplishments are as follows:

The CLOMR was completed in October as well as the Kipling Bridge Construction. Remaining LONP work is ongoing.

Critical Work continues to be the FFGA, acquisition of Right-Of-Way parcels, and utility relocations along the corridor.

East and West gulch bridges—east of Sheridan, under construction. Foundations and abutment walls constructed.

As of October 2008, the status of Change Control is as follows:

TYPES OF CHANGES	AMOUNT
• Design Work Orders:	0
• Design Change Orders:	18
• Design Pending Change Orders:	0
• Construction Work Orders:	0
• Construction Change Orders:	14
• Construction Pending Change Orders:	14

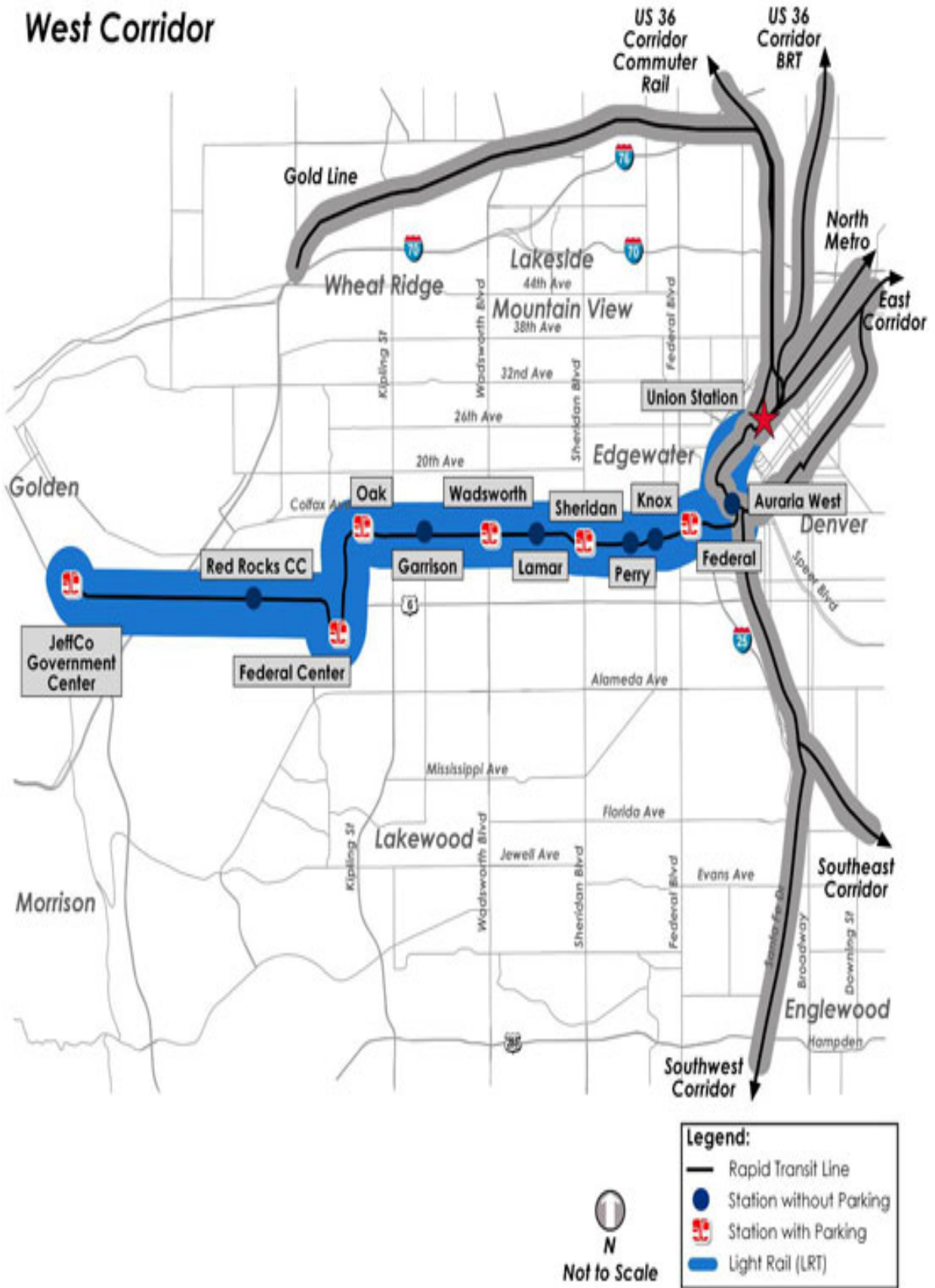
- Change Orders executed in the month ending October 2008 with a cost in excess of \$100,000.

NONE

- Pending Changes in review during the month of October 2008, with costs in excess of \$100, 000.

PCN	DESCRIPTION	AMOUNT
CO-013	Utility Relocation	\$ 6,688,748
CO-014	Utility Relocation	\$ 889,056
CO-015	Drainage	\$ 7,543,850
CO-016	Kipling Bridge Walls	\$ 3,328,983
CO-017	Wall Installation at Dry Gulch East/West	\$ 1,584,295

West Corridor



Utilities

Design:

-
- RTD staff has prepared 179 work orders for utility relocations to be completed by the utility owners. The estimated total number of utility owner work orders for this project is 200. The work orders have been prioritized by completing the most complicated relocation work and those most critical to the contractor schedule, as the highest priority.
-
- All work orders have been written and submitted to Consolidated Mutual Water Company (CMWC). RTD has two remaining work orders to execute with CMWC. All other work orders are in design, protect in place or construction.
- All of the work orders for relocating Comcast facilities have been written and are in design, protect in place, or construction.
- RTD needs to write approximately 10 work orders to Xcel – Electric Distribution for utility relocation design. All other work orders are in design, protect in place, or construction.
- RTD needs to write work order to relocate the Xcel Electric Transmission facilities from east of Federal to the Platte River. All other work orders are in design, towers on order, or protect in place.
- RTD needs to write approximately six work orders to Xcel – Gas Operation for utility relocation design. All other work orders are in design, protect in place, or construction.
- RTD needs to write six work orders to Qwest Communications for utility relocation design. All other work orders are in design, protect in place, or construction.
- RTD continues to meet with Denver Transit Construction Group (DTCG) to identify early utility work that they can begin and coordinate with other utility owner relocations. RTD designer DEA, is making revisions to some of the drawings on the accelerated set of utility and drawings to address stakeholder comments.
- All known dry utilities requiring relocation design will be completed by December of 2008.

Construction:

- Xcel has completed the relocation construction from Garrison to Upham and has completed energizing the relocated eclectic facility. Xcel is wrecking out the power poles located in 13th Avenue from Garrison to Upham. Xcel will start relocating the overhead electric facilities located along 13th Avenue Upham to Sheridan. Xcel Energy-Electric will complete all known electric relocation Construction by April 2009 with the exception of electric construction that requires construction coordination with DTCG.
- Xcel Energy-Gas Operations will complete all known gas relocation construction by April 2009 with the exception of gas construction that requires construction coordination with DTCG.
- Qwest has completed phase one of the underground relocation construction along 14th Avenue from Independence to Wadsworth. Phase two of the relocation is ongoing and consists of the pulling of copper, fiber optic cable, and cold splicing of all copper and fiber optic facilities. Qwest Communication will complete all known communications relocation construction by August 2009, with the exception of communication construction that requires construction coordination with DTCG and the relocation along 13th Avenue from Independence to Wadsworth (see concerns).

Utilities Continued

- Comcast continues to relocate their overhead facilities along 13th Avenue from Independence to Harlan. Comcast will complete all known relocation construction by June 2009, if necessary, to accommodate the LRT construction.
- The City of Lakewood contractor has completed the sanitary sewer relocation construction from Harlan to Saulsbury and continues construction west of Saulsbury. The City of Lakewood contractor has completed the boring of the sanitary sewer pipe under Wadsworth. The COL contractor brought on a second crew to connect the sanitary sewer services to the main sanitary sewer pipe, while the other crew continues with the main sanitary sewer pipe construction.
- CMWC will relocate their water lines in conjunction with the City of Lakewood's Sanitary Sewer Relocation Project. CMWC will complete all known utility relocation construction by April 2009, with the exception of water line construction that requires construction coordination with DTCG.
- Xcel forces have constructed the caissons for the transmission towers located on the west side of Sheridan, east side of Sheridan Tennyson, and the two caissons for the towers located between Perry and Newton. Xcel's crews have constructed two of the Sheridan transmission towers. The remaining transmission towers construction is scheduled to be completed by November 2008.
- Level 3 will complete all known relocation construction by December 2008, if necessary, to accommodate LRT construction.
- Adesta will complete all known relocation construction by summer 2009, if necessary to accommodate LRT construction.

FORECASTED WORK ORDERS	TOTAL # OF WO WRITTEN	TOTAL # WO NEGOTIATED	WO DE-SIGN STARTED	WO DESIGN COMPLETED	WO CONSTRUCTION STARTED	WO CONSTRUCTION COMPLETE	% DESIGN STARTED	% CONSTRUCTION STARTED
200	175	116	120	82	70	42	60%	35%

Areas of Concern:

- The schedule that Qwest has provided for the relocation of their duct bank in 13th Street is not acceptable for the overall project schedule. RTD staff and DTCG are working together to design a plan that will allow DTCG to construct around Qwest facilities to minimize or eliminate impacts to DTCG construction schedule.

Drainage

This Month:

- Early work construction plans for Drainage and Utilities have been approved by the City of Lakewood, Jefferson County, and the City of Golden. Storm sewer construction has begun for the early work.
- The City of Lakewood betterment cost estimate for the betterment costs of the storm drainage systems at the Richey Park Outfall, Pierce Street System, and the Lamar Street System, was submitted to and approved by Lakewood. An MOU has been written for this work between RTD and Lakewood. An IGA will be required. The agreement is anticipated to be finalized by the end of this year.
- Construction of Drop Structure No. 4 began in November. IFC plans have been finalized and approved by the Urban Drainage and Flood Control District and the City and County of Denver (CCD). Constructing is anticipated to be completed by the end of the year.
- RTD staff continues to negotiate the terms of agreement with representatives of the Agricultural Ditch and Reservoir Company and the Colorado Department of Transportation (CDOT). It is anticipated that the agreement will be finalized by the end of December.
- RTD staff continues to negotiate the terms of agreement with representatives from the Wight Lateral Irrigation Ditch and anticipate that the agreement will be finalized by the end of the year.
- RTD staff is working with CDOT staff to address concerns regarding MS4 requirements for West Corridor work within CDOT right-of-way.

Next Month:

- RTD staff continues to work with stakeholders to address any final comments and concerns on the 100% construction plans and obtain approvals on the final plans.
- RTD staff is reviewing the final drainage report for the West Corridor that was received at the end of October.
- RTD staff is reviewing the draft Storm Water Quality Management MS4 report that was submitted mid-December, for work in CDOT right-of-way.
- A detailed report and design to incorporate the ballasted trackway as a water quality BMP, will be completed by the end of January for submittal to CDOT and CDPHE.

Areas of Concern:

- IFC plans are contingent upon the resolution of stakeholder comments and concerns.

ROW

This Month:

ROW Planning

- Receive and review conformed ROW plans from DEA in order to provide corrections for final delivery.
- Provide information regarding project status and activities to property owners, legal representatives, internal staff, and media, as required.
- All impacted property owners were notified by RTD and advised of the acquisition process.

Property Acquisition and Relocation

- Closings and/or Immediate Possession has occurred on sixteen (16) of the properties. A settlement is pending on one (1) parcel and immediate possession hearings are being scheduled in Denver and/or Jefferson County Courts for there (3) additional parcels.
- Relocation consultants are completing the determination of eligibility for relocation assistance for tenants and/or owners related to parcels currently owned or being acquired by RTD and assisting residents with eligibility for relocation benefits.

Property Management

- Consultant services are providing property management services for properties now owned by RTD.

Next Month:

ROW Planning

- Will begin issuing Notices of Intent to Acquire and making appraisal assignments.
- On-going scheduling discussion with internal and CMGC staff.

# OF PARCELS IMPACTED	# OF PARCELS CERTIFIED	# OF APPRAISALS IN PROCESS	# OF APPRAISALS COMPLETE	FMV DETERMINATIONS	ACCEPTANCE	READY FOR CONSTRUCTION
319	319	45	20	20	16	7

Areas of Concern:

- None

Structures Construction

This Month:

- The superstructure was set for the Wolff Street pedestrian bridge. Form work was completed on the Wolff Street pedestrian bridge deck. On Thursday, November 20th, concrete was placed in the bridge deck.
- The form work was removed and structural backfilled was placed at abutment #1 on the Hazel Ct. pedestrian.
- Bearings and girders were set on the East Gulch bridge at the beginning of the month. Precast bridge deck forms were set and the overhang form work was begun on the East Gulch bridge.
- The contract set the girders for the West Gulch bridge. Precast bridge deck forms were placed on the West Gulch bridge. Overhang brackets and diaphragm form work was in progress on the bridge.

Next Month:

- Place concrete in bridge decks at both the East and West Dry Gulch bridges.
- Construct bridge rail on the Gulch bridges.
- Place concrete in Pier #2 on the Hazel Ct. pedestrian bridge.
- Begin shop fabrication on the Hazel Ct. pedestrian Bridge.

Areas of Concern:

- None

Civil Construction

This Month:

1. Accelerated Utility and Drainage Package
 - Substantially completed 24" storm sewer (E. Kipling to Pikeview) from approx. EB STA 1348+00 to 1354+50.
 - Completed replacement/backfill of existing 8" sanitary sewer pipe (VC to C-900) at approx. EB STA 1366+30 (Holland St.)
 - Initiated installation of 48"/18" storm sewers and manholes at EB STA 1306+00 (Quail St.)
 - Continued preconstruction planning, coordination, and permitting activities for upcoming utility and drainage work at Collins St. and for the Richey Park CBC work.
2. Drop Structure 4 (Dry Gulch)
 - Installed stormwater/erosion control measures and surface flow diversion system (pump around) and prepared subgrade.
3. Other — Continued preconstruction planning, coordination, and permitting activities for the following upcoming work:
 - Jeffco 8" water main
 - Knox Ct. 30" water main and CBC
 - 60" ADARC pipe at Simms/Union
 - Kipling Bridge fill replacement
 - Kipling MSE wall panel fabrication/construction

Next Month:

1. Accelerated Utility and Drainage Package:
 - Continue installation of 48"/18" storm sewers and manholes at Quail St.
 - Initiate installation of 18" storm sewer and lowering of water main at Collins St.
 - Continue preconstruction planning, coordination, and permitting activities for upcoming Richey Park CBC work.
2. Drop Structure 4 (Dry Gulch)
 - Install cut-off wall and place/grout boulders.
3. Other— Continue preconstruction planning, coordination, and permitting activities for the following work:
 - Jeffco 8" water main
 - Knox Ct. 30" water main and CBC
 - 60" ADARC pipe at Simms/Union
 - Kipling Bridge fill replacement
 - Kipling MSE wall panel fabrication/construction

Areas of Concern:

- None

Systems

This Month:

- Soil borings and soil resistivity measurements were taken at the site for Traction Power Substation #54. A report based on these measurements will be used to confirm the design of the ground mat for the substation.
- The systems design consultant completed a study of the overhead contact system design to determine what changes might be required if RTD were to use hard-drawn copper wire in place of the Bronze 80 alloy presently specified. It was determined that for all of the auto-tensioned segments of the West Corridor, the design permits the use of hard-drawn copper as a drop-in replacement for Bronze 80. The use of HD Cu may require a few additional poles in the fixed terminated segments near Union Station.
- Revisions were made to the duct bank system to accommodate the new TPSS 54 location on Lamar Street.
- Denver Water has added corrosion control requirements for the 30" water main along Knox Court, which conflict with the West Corrosion Control Standard Drawings. Agreement on the corrosion control requirements for this utility have not been reached.
- The proposed change to MSE walls for bridge structures will require modifications to underground electrical conduit systems. The systems design consultant is coordinating with the civil designers to determine what might be required.

Next Month:

- RTD personnel and Systems contractor Balfour Beatty Rail, Inc. (BBRI), plan to visit the TPSS and OCS hardware manufacturing facilities to ensure that the proposed manufacturers have the capacity to meet their respective production responsibilities.
- BBRI will begin using the RTD's QMO Database for the entry of all submittals and RFIs.

Areas of Concern:

- None

Quality Management

This Month:

- The RTD FasTracks team has implemented a systematic quality management oversight (QMO) program based on the FTA Quality Assurance/Quality Control Guidelines, and the international standard for quality systems, ISO 9001. RTD's Quality Management system is described in the RTD FasTracks *Quality Assurance Program Plan*. Specific processes are further described in the *Quality Oversight Program Manual*, and accompanying procedures.
- In November 2008, Kumar and Associates continued split sampling/testing of concrete and soil backfill and embankment. RTD completed review and provided comments to Kumar and Associates regarding the second draft of the Owners Verification Testing Program Manual. This manual describes the types and processes for materials testing services to be employed on the West Corridor LRT Project as well as the overall FasTracks Program.
- The weekly Quality Team meetings and verification inspections of the contractor's early construction work continued in November, in accordance with the RTD Quality Oversight Program Manual. Results of RTD verification inspections are communicated to the contractor, and tracked within RTD's Quality Management Oversight database, to ensure any nonconformances are corrected to RTD's satisfaction and closed.

Next Month:

- Kumar and Associates are scheduled to resubmit the draft OVT Program Manual to RTD.
- FasTracks staff will begin review of the Quality Management Oversight Program Manual.
- Participate in review and update of the components of the West Corridor Project Management Plan, as related to Quality.

Areas of Concern:

- None

Public Information

This Month:

- November 3, 2008 Beth Jacobs High School Meeting
- November 4, 2008 Met with Chris and JB Baer about Construction Impacts
- November 5, 2008 Press Release for Wolff Street Pedestrian Bridge
- November 10, 2008 St. Anthony's Hospital Meeting
- November 11, 2008 Distribute Door Hangers for Quail Sanitary Sewer Work
- November 14, 2008 Elected Officials Briefing
- November 17, 2008 eNewsletter Distributed
- November 18, 2008 Distribute Door Hangers for Collins/Simms Sewer Work
- November 25, 2008 West Corridor Team/Stakeholders Team Building Event

Next Month:

- December 2, 2008 Distribute Door Hangers for Kipling Walls/Embankment fill
- December 9, 2008 Small Stakeholders Meeting
- December 10, 2008 West Corridor Overview Meeting with Matt Cohen — New Board Member
- December 15, 2008 eNewsletter Distributed
- December 21, 2008 Distribute Door Hangers for Lamar Work

Areas of Concern:

- None

RISK MANAGEMENT SUMMARY

In collaboration with the FTA and PMOC , RTD has established a Risk Management Program which includes implementing the Risk Management Plan (RMP) and Contingency Management Plan (CMP). With these strategies, the West Corridor Risk Management Team as developed procedures to identify, analyze, implement mitigation, and manage risk.

The **Contingency Drawdown Chart** on the following page, shows the West Corridor has spent \$947,130 of the total contingency account of \$44,282,416 which is 2% of the total contingency. Currently the West Corridor is 57% above the minimum contingency requirement of \$27,540,984, and within the appropriate contingency limits.

The **Risk Register**, on page 13, shows that the West Corridor has identified 25 Risks.

# of Low Risk	# of Medium Risk	# of High Risk
9	11	5

* Based on Likelihood to occur, cost impact, schedule impact

Newly Identified Risks:

- There are no new risks to the West Corridor this month.

Focused Risks:

The RMT has focused their efforts on three risks that are active. Design Errors (SCC PW-01) has a level High risk. This risk takes into account any changes from the 90% drawings that were used as bid documents for the hand shake agreement and the complete IFC drawings. It also takes into account any missing stakeholder comments. Further along in construction the contingency budget is to account for any design errors/omissions identified during construction. Mitigation efforts are in place. WC had held off the issuance of IFC Drawings until all stakeholder comments are incorporated.

ROW is critical to the start of construction for the West Corridor, and is given a level High risk. To mitigate ROW risks the RMT has had DTCG Review ROW drawings for removal or reduction in ROW, based on construction work-arounds. Second, in conjunction with DTCG ROW parcel sections have been given priority levels. Third, RTD and DTCG are currently assessing construction re-sequencing and construction phasing opportunities as means of potential mitigation measures.

RISK MANAGEMENT SUMMARY Continued

Risks Mitigated:

- SCC60-5 Delay in possession of parcels not certified, but requested prior to April 09. This risk has been removed from the Risk Register because early parcel availability only benefits the project. If access is not available prior to April 09 there are no cost or schedule impacts incurred.

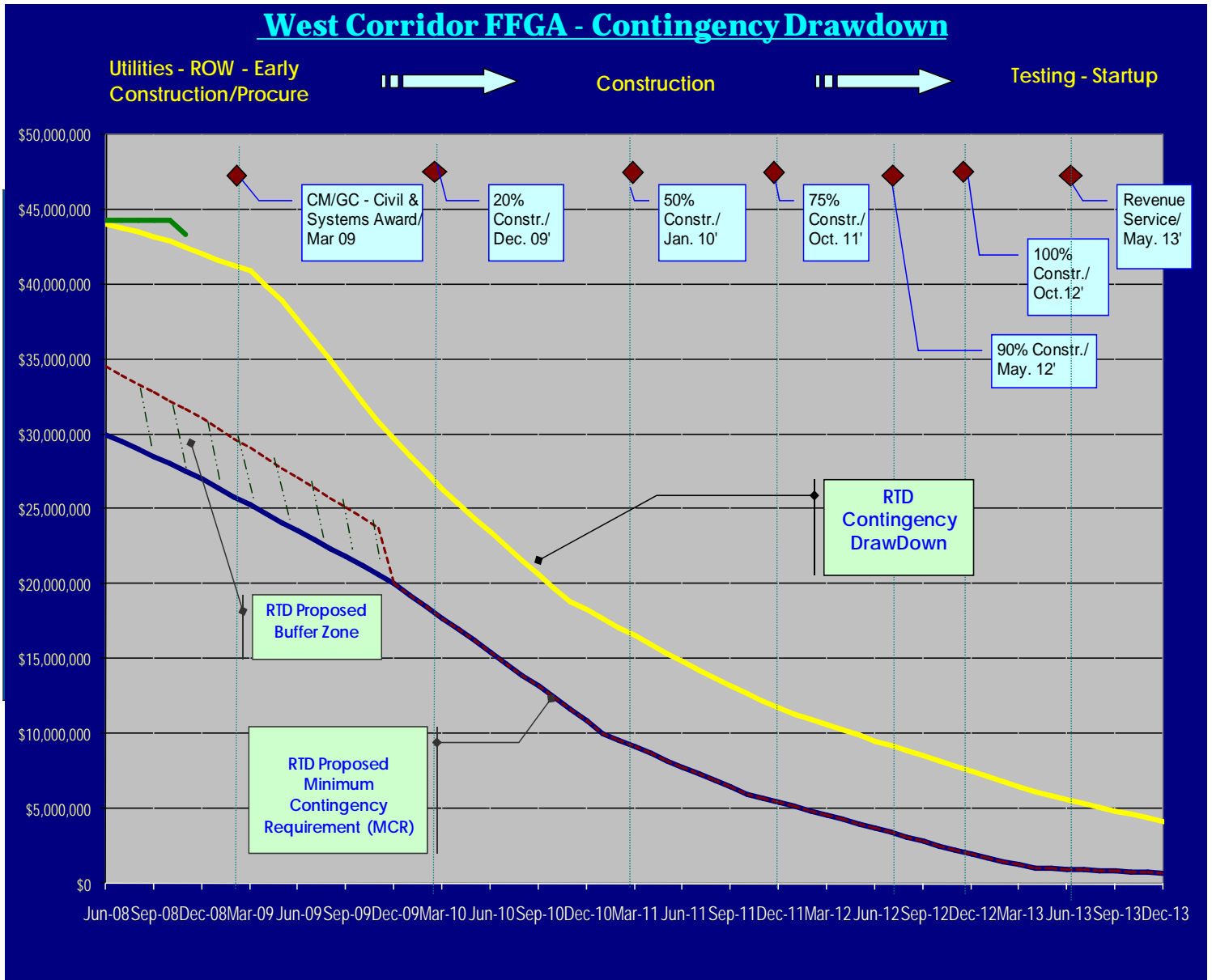
Risks with Potential for Improvement:

The risk for Escalation and Copper Procurement are noteworthy risk reduction mitigations that will benefit the bottom line cost for the West Corridor and reduce the required contingency. The Handshake agreement costs for materials, labor and fuel were calculated at a higher rate than the current market, thus we expect a reduction in the final GMP. Also included in the budget was 21M in potential escalation costs above the handshake agreement. Based on the market trends this figure will be reduced as well. Additionally, DTCG is considering including all risks for escalation, thus removing escalation as a risk entirely and removing the required contingency as well. Copper market prices have lowered significantly since the budget was established, and RTD is forecasting a savings in excess of 5M for copper procurement and escalation.

RISK MANAGEMENT — Contingency Drawdown

In collaboration with the FTA and PMOC, RTD is designing a Risk Management Program which includes the Risk Management Plan (RMP) and Contingency Management Plan (CMP). Part of this management includes the Risk Register and the Contingency Drawdown Chart to display the cumulative contingency maximum/minimum range drawdown, as the project progresses. These tools provide for the close management of risk and adherence to the West Corridor Budget.

The West Corridor is maintaining the allowable contingency at 57% above the minimum contingency.



RISK MANAGEMENT — Risk Register

PROJECT RISK REGISTER		Low (1)	Med (2)	High (3)	Legend	
Denver West Corridor		< 10%	< > 10-50%	> 50%	< 100	
REV : 1		< \$100K	< > \$100K - 500K	> \$500k	100-250	
DATE ISSUED :December 30, 2008		< 2 Mths	< > 2 - 6 Mths	> 6 Mths	> 250	
Risk ID	Risk Event	Probability	Cost \$	Time	Score	Discipline Lead
Project-Wide						
PW-1	Design errors (or omissions) on the part of RTD/DEA/FSRC that result in modifications to the construction contract resulting in change orders (CO) affecting: cost, schedule, or contract terms.	100	3	2	600	ALL DISCIPLINE MANAGERS
PW-7	Escalation: The risk of prices for critical materials exceeding chosen commodities index(es) included in the contracts.	50	2	1	100	ERIKA
PW-S	Potential issues surrounding details of interfaces between multiple contractors, sub-contractors, stakeholders, and other entities (such as Aardex).	80	2	1	160	Dennis
SCC 10 Guideway and Track						
SCC10-38	Cost of soil improvements to 2,400 linear feet of retaining walls exceeding allowances.	50	1	1	50	PAUL D
SCC10-24	Exposure to cost fluctuations remains since steel and cement still have to be procured for some of the 12 bridges. Until fabrication and construction of all bridges are complete the price of commodities remains a risk. Unable to get firm prices for all br	25	1	1	25	ERIKA
SCC10-15	The 100% design may not support the removal of retaining walls and anticipated cost reductions.	30	1	1	30	JACK V
SCC10-28	May decrease amount of excavation above that allocated in the GMP. CAN THIS BE REMOVED FROM THE RISK AS IT IS A POTENTIAL REDUCTION	30	2	2	120	PAUL D
SCC 20 Stations, Stops, Terminal						
SCC20-21a	The Jefferson County Government Center parking garage may not be completed in time for opening day if there is a requirement for additional parking. The EIS required 700 spaces; plans are for 549.	80	1	1	80	DENNIS C
SCC 40 Sitework and Special Conditions						
SCC40-23	The 100% design for the sound walls and ballast walls may not achieve expected cost reductions.	90	2	1	180	JACK V
SCC40-19	CM/GC allowance for demolition and site remediation may not be sufficient.	80	3	1	240	PAUL D
SCC40-20	Utility relocations may not be completed without impacting WC schedule. Possible unknown utilities or unanticipated costs.	20	2	1	40	VIVIAN S
SCC40-25	Hazmat for the BYL	80	2	2	320	JOE C

RISK MANAGEMENT — Risk Register Continued

PROJECT RISK REGISTER		Low (1)	Med (2)	High (3)	Legend	
Denver West Corridor		< 10%	< > 10-50%	> 50%	< 100	
REV : 1		< \$100K	< > \$100K - 500K	> \$500k	100-250	
DATE ISSUED :December 30, 2008		< 2 Mths	< > 2 - 6 Mths	> 6 Mths	> 250	
Risk ID	Risk Event	Probability	Cost \$	Time	Score	Discipline Lead
SCC40-24	PUC Application and response. Potential denial of RTD request for no horns or bells at Intersections in Lakewood	50	2	2	200	BRENDA T
SCC40-21	Hazmat and contaminated soil removal may be more significant than expected. Significant risk of unanticipated hazmat sites during construction. Seigel Spur underground tanks that we not taken into account during design	60	2	2	240	MATT H
SCC 50 Systems						
SCC50-22	Fire department requires blue light or SCADA be added back into scope. Added to GMP	100	3	1	300	KEN M
SCC50-11	There are significant and varied interfaces with existing corridors. These interfaces (and cut-overs) pose significant schedule risks.	50	2	1	100	KEN M
SCC 80 ROW						
SCC60-6	Delay in acquisition of fourplex and completion of relocation for the tenants for Sheridan Bridge construction)	100	3	3	900	PHIL L
SCC60-8	Final ROW settlement costs exceed budget estimates.	90	3	1	270	Nick
SCC60-9	Concern that railroads aren't doing preparatory work since they are awaiting the 100% design drawings for the Burnham Yard Lead. That makes a potential schedule and possible cost impact (since the cost is RTD's figure).	25	1	2	50	JOE C
SCC60-5	Delay in possession of parcels not yet certified and requested prior to April 09. No cost/Schedule impact	90	0	0	0	PHIL L
SCC 80 Professional Services						
SCC80-6	Possible need for additional coverages on ROCIP (including DBE coverage) for bid and performance bonds).	25	2	1	50	RON S
SCC80-3	Staffing requirements and overhead costs may rise if schedule slips. (RTD Staff)	60	2	1	120	JERI T
SCC80-8	Possible conflicts of areas of responsibility for testing, delays in test completion, or other integration could lead to delays and additional staffing costs.	50	2	1	100	KEN M
Terms and Conditions						
T&C-6	Costs exceed budgeted allowance accounts (graffiti, soil,)	50	3	1	150	ERIKA
T&C-18	Change orders may arise due to vague areas of responsibility between CM/GC and Systems Contractor	50	1	1	50	KEN/PAUL
T&C-27	Stormwater/drainage issues impacting the Parking Facility at Cold Springs	90	1	1	90	PAUL V

DBE Participation

Firm	DBE Goal	Actual for November 2008
David Evans & Associates	21%	17%
FRSC	10%	14.36%
Denver Transit Construction Group (DTCCG)	13% Pre-Construction	19%

PROJECT BUDGET SUMMARY

Major Contracts

Contract #	Contractor	Scope/Services	Approved Amount	Award Date
672122SR	A.J. Ventures, Inc.	Potholing	\$2,400	09/18/06
15DO031	AECOM Consultants, Inc.	Traffic Modeling	\$85,031	01/09/06
15DO047	Associated Value Consultants	Property Appraisal	\$66,600	07/01/06
18DR007	Balfour Beatty Rail, Inc.	System Construction	\$5,500,000	07/14/08
15DO041	Bonnie Roerig & Associates	Property Appraisal	\$66,600	07/01/06
13FR019	Booz, Allen & Hamilton	Vehicle Inspection	\$643,434	11/25/03
17DH001	Briggs Field Services, Inc.	Property Acquisition	\$400,000	09/07/07
672047CR	Burlington Northern Santa Fe	Flagging	\$3,000	04/18/05
15DH001	Carter::Burgess	Program Management	\$4,516,896	07/05/05
PO5083	CDOT	Utilities - Kevin Kusty	\$29,200	06/01/07
PR133636	City of Lakewood-Fed Ctr Street IGA	Bikepath design & construction	\$1,400,000	03/18/08
15DO044	Civil Technology	Property Appraisal	\$66,600	07/01/06
PO9901	Comcast WO #64	Utility Relocation	\$11,243	12/15/07
57DH017	Consolidated Mutual Water	Utility Relocation	\$192,425	01/02/08
15DH007	David Evans and Associates	Final Design	\$25,890,242	11/09/05
56DU001	Denver City & County	FasTracks Liason	\$123,693	10/31/05
16FFW01	Denver Transit Const. Group	Construction Services	\$22,576,694	06/30/06
17FO034A	Duncan, Ostrander & Dingess, P.C.	Legal Services	\$900,000	01/15/08
15DH006	Front Range Sys.Consultant	System Consultant	\$9,347,844	10/21/05
23FR015	GE Transportation	Automatic Train Stops	\$844,044	07/07/03
PO16312	Graceland Properties	Property Appraisal	\$50,000	04/02/08
47DH008	GSA - Federal Center Station	ROW Acquisition	\$5,363,836	09/01/07
17DH013	H.C. Peck & Associates	Property Acquisition	\$6,599,324	09/10/07
15DO043	Hegarty & Green, Inc.	Property Appraisal	\$66,600	07/01/06
17FO034B	Icenogle, Norton, Smith, Bllieszner, & Gillda	Legal Services	\$700,000	01/15/08
15DO046	Joel C. Griffen	Property Appraisal	\$66,600	07/01/06
15DO028	Kaplan Kirsh Rocksell, LLP	Legal Services	\$100,000	08/30/05
18FR001	Kumar & Associates	Testing	\$50,000	08/01/08
15DO007	LT Environmental, Inc.	Environmental Service	\$67,704	09/13/05
16FO029	Marsh USA, Inc.	Risk Assessment	\$927,386	08/28/07
16DR003	Mass Electric Construction Co.	Elati Yard Improvements	\$214,385	06/15/06
17FO034C	May & Associates, P.C.	Legal Services	\$900,000	01/24/07
27FH024	Progressive Rail Services Corp.	Running Rail	\$4,357,000	01/08/08
TBD	Public Service	Utility Relocation	\$443,384	01/01/08
35FR015	Queen City Railroad Construction	Elati Yard Improvements	\$1,823,164	04/07/06
57DH020	Qwest Communications	Utility Relocation	\$59,389	09/01/07
27FH025	Rocla Concrete Ties, Inc.	Concrete Ties	\$3,170,000	01/08/08
15DO045	Rothweiler Group, Inc.	Property Appraisal	\$66,600	07/01/06
12FR201	Siemens Transportations Systems	Light Rail Vehicles	\$71,150,090	12/28/04
17DH014	Universal Field Services, Inc.	Property Acquisition	\$800,000	09/14/07
572031CR	Urban Engineers, Inc.	Risk Assessment	\$49,547	03/15/05
57DH016	Xcel Energy	Utility Relocation	\$182,796	10/10/07

Contracts Total

\$169,873,751

PROJECT BUDGET SUMMARY

Corridor Element	(YOE\$) Baseline Budget	Allocated Contingency	Approved Changes	Approved Budget (BUD)	*Appropriated/ Funded	Obligated/ **Committed to Date	% Committed	Actual to Date	Estimate at Completion (EAC)	Budget Variance (BUD-EAC)
Thru 12/31/08 Thru 11/30/08										
10 Guideway & Track Elements	\$157,703,164	\$4,667,000	\$0	\$157,703,164	\$8,698,705	\$152,717,175	97%	\$3,056,862	\$157,703,164	\$0
20 Stations, Stops, Terminals	\$57,959,040	\$4,261,000	\$0	\$57,959,040		\$47,563,055	82%	\$0	\$57,959,040	\$0
30 Support Facilities: Yards, Shops, Admin Bldgs	\$2,000,000	\$0	\$0	\$2,000,000	\$5,253,854	\$1,910,955	96%	\$1,939,514	\$2,000,000	\$0
40 Sitework & Special Conditions	\$128,414,264	\$9,385,000	\$0	\$128,414,264	\$6,150,358	\$120,082,247	94%	\$1,989,630	\$128,414,264	\$0
50 Systems	\$78,563,616	\$0	\$0	\$78,563,616	\$4,141,025	\$9,641,024	12%	\$0	\$78,563,616	\$0
60 ROW, Land, Existing Improvements	\$54,851,476	\$4,570,000	\$0	\$54,851,476	\$20,911,569	\$17,557,021	32%	\$16,387,870	\$54,851,476	\$0
70 Vehicles	\$71,150,090	\$0	\$0	\$71,150,090	\$71,150,090	\$71,150,090	100%	\$69,712,750	\$71,150,090	\$0
80 Professional Services	\$85,890,126	\$3,401,000	\$0	\$85,890,126	\$38,788,891	\$55,999,594	65%	\$43,058,561	\$85,890,126	\$0
90 Unallocated Contingency	\$16,478,416	\$0	\$0	\$16,478,416	\$50,210,562	\$0	0%	\$0	\$16,478,416	\$0
Capital Total	\$653,010,191	\$26,284,000	\$0	\$653,010,191	\$205,305,053	\$476,621,161	73%	\$136,145,187	\$653,010,191	\$0
100 Finance Charges	\$56,819,809			\$56,819,809					\$56,819,809	
TOTAL PROJECT COST (10-10)	\$709,830,000			\$709,830,000					\$709,830,000	

Notes:

The actual cost for EIS/PE is included in the actual cost to date.

*Appropriations are updated on an annual basis

**Committed to Date includes Federal portion of May 22nd Agreement with CM/GC

PROJECT SCHEDULE SUMMARY

Attached is the West Corridor Summary Project Schedule through November 30, 2008. Schedule highlights are as follows:

- Civil Design is 99% complete
- System Design is 99% complete
- LONP Construction Early Work is 60% complete
- Full Construction NTP is scheduled for April 2009

Civil and System Issue for Construction drawings will be distributed to the DTCG the first week of February 2009, after all stakeholder comments have been addressed.

Burnham Yard Lead Final Design drawings were completed 11 November 2008.

Civil/Systems construction coordination milestones are in review..

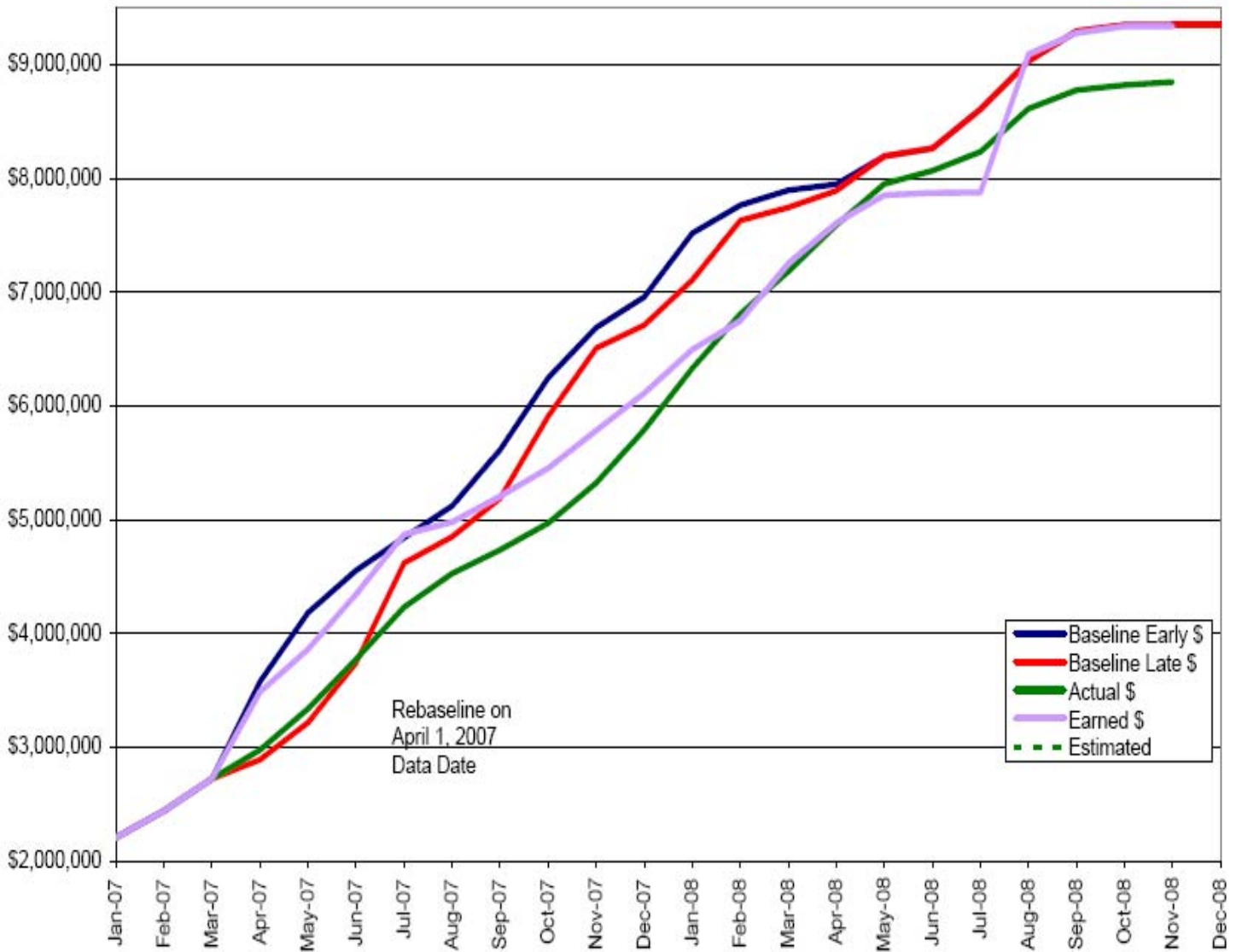
Critical work for next month consists of ROW procurement, FFGA funding, and dry utility work.

LONP Early Construction Work is continuing. Kipling Bridge is complete. Dry Creek West and Dry Creek East Bridges are ongoing and forecast to complete by March 2009. Tennyson, Wolff, and Hazel Pedestrian Bridges are in progress and forecast to complete by March 2009. Steel Procurement for bridges is ongoing, as well as the dry and wet utility relocations.

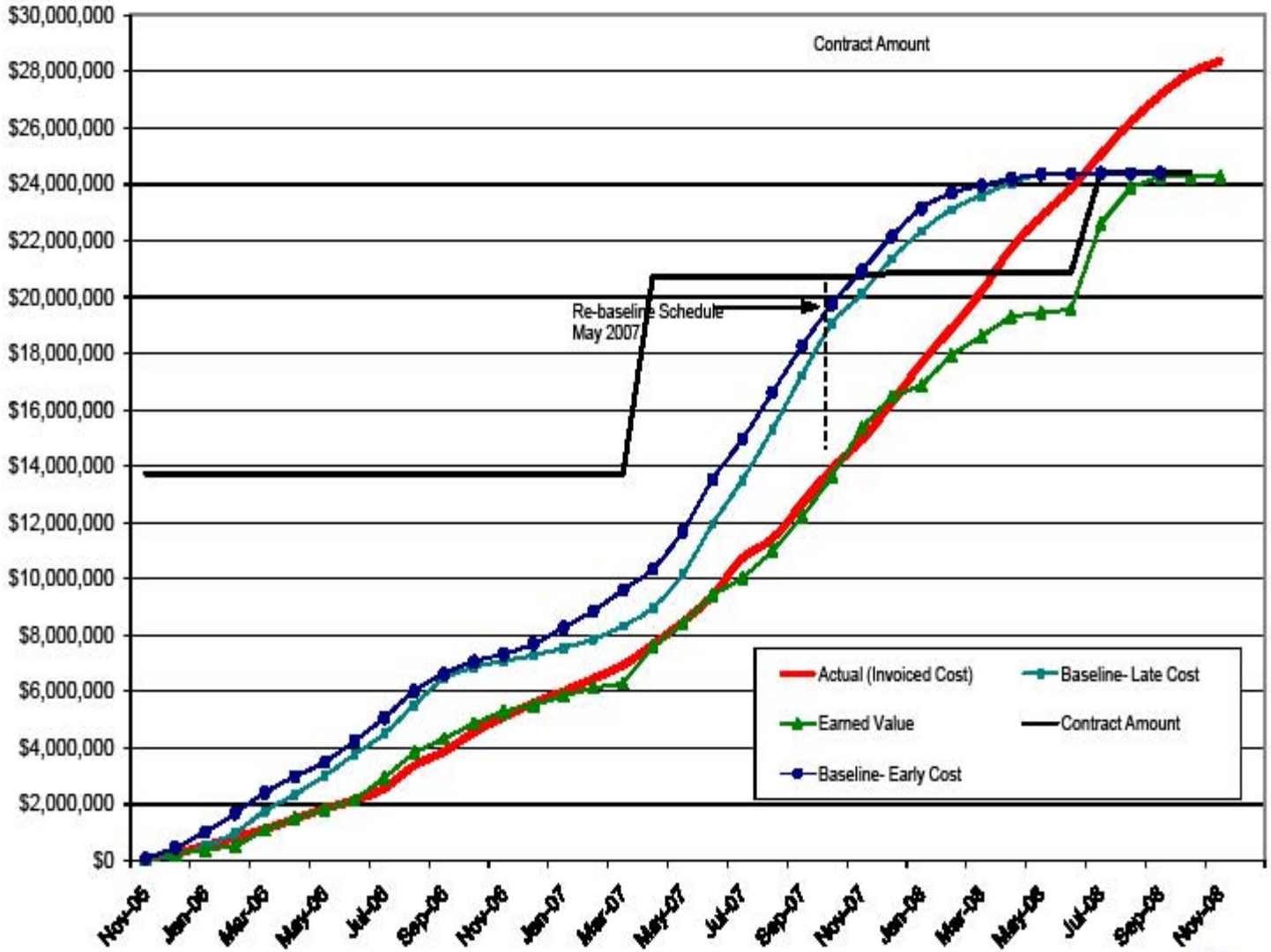
Critical to the construction schedule is the availability of the CCD Maintenance Facility location to start the Federal/Decatur construction work.

▪

West Corridor - System Design Overall Progress Curve



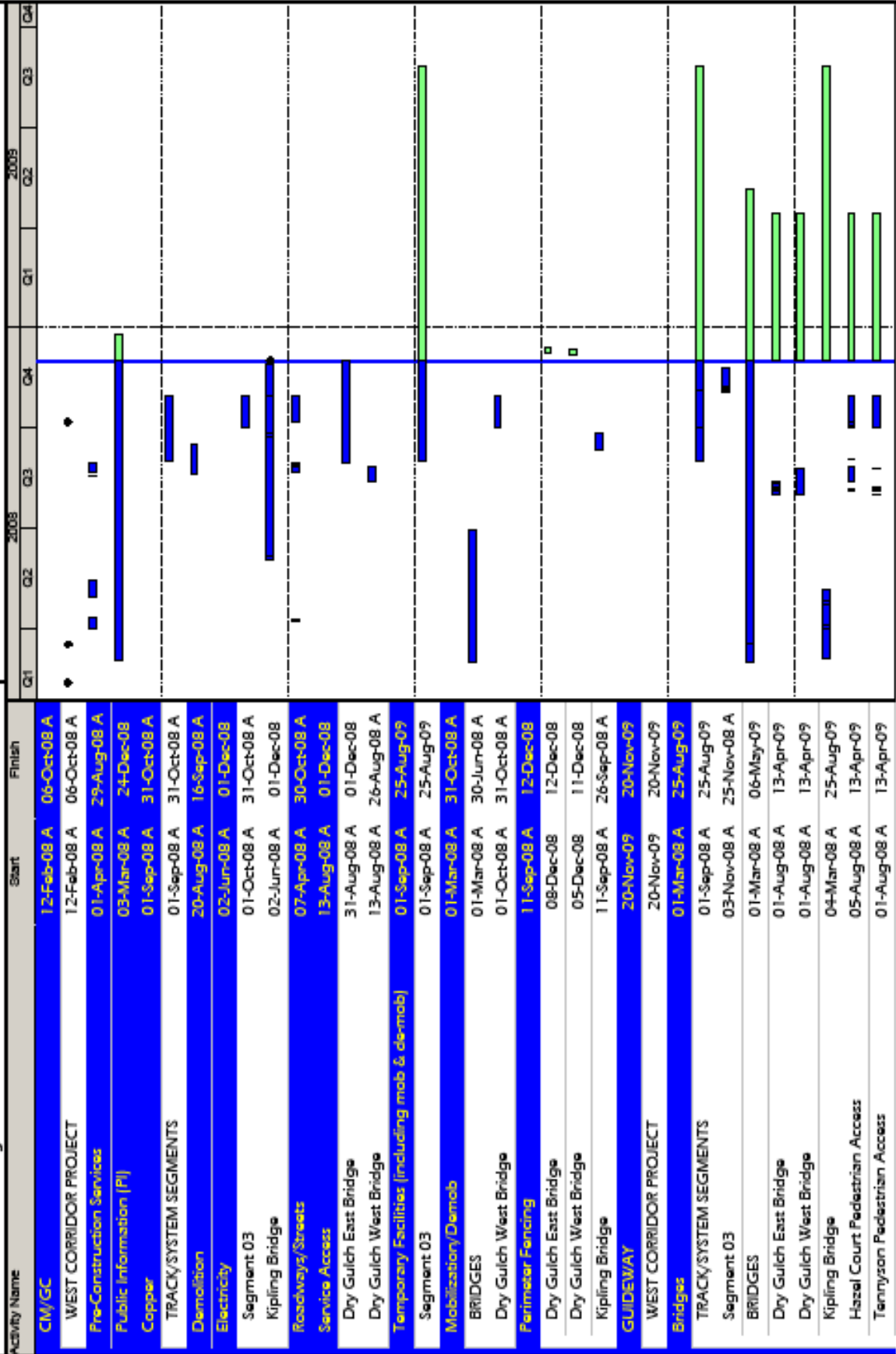
West Corridor Final Design Cost Curve



Internal FasTracks Schedule - WEST CORRIDOR - Near Term												
Task	Dec	Jan	Feb	Mar	Apr	May	Jun	Jul	Aug	Sep	Oct	Nov
Full Funding Grant Agreement (FFGA)												
FFGA Elected												
Maintenance Facilities												
CCD Maintenance Facility Relocation												
CM/DC												
RTD Board Approval of CM/DC Construction Contract Mod												
NTP for Construction - Tied to FFGA Submittal												
RIGHT-OF-WAY (ROW)												
Output Milestone - ROW Ready for Construction - Federal Center Station												
Output Milestone - ROW Ready for Construction - Wadsworth Bridge												
Output Milestone - ROW Ready for Construction - Oak Station												
Output Milestone - ROW Ready for Construction - Track Section 02 - Indiana to												
Output Milestone - ROW Ready for Construction - Red Rocks Station												
Output Milestone - ROW Ready for Construction - Federal Station												
Output Milestone - ROW Ready for Construction - Indiana Bridge												
Output Milestone - ROW Ready for Construction - Decatur Bridge												
Output Milestone - ROW Ready for Construction - Peary Station												
Output Milestone - ROW Ready for Construction - Track Section 05 - W. Sheriff												
Output Milestone - ROW Ready for Construction - Jeffco Station												
Output Milestone - ROW Ready for Construction - Knox Station												
Output Milestone - ROW Ready for Construction - Pikeview Pedestrian												
Output Milestone - ROW Ready for Construction - Knox Ct Bridge												
Output Milestone - ROW Ready for Construction - Garrison Station												
Output Milestone - ROW Ready for Construction - Auraria Station												
Output Milestone - ROW Ready for Construction - I-70 Tunnel												
Output Milestone - ROW Ready for Construction - Track Section 01 - Jeffco to E												
Output Milestone - ROW Ready for Construction - Track Section 03 - 6th Ave to												
Output Milestone - ROW Ready for Construction - Track Section 04 - W. Wadsw												
Output Milestone - ROW Ready for Construction - Lamar Station												
Output Milestone - ROW Ready for Construction - South Platte Bridge												
Output Milestone - ROW Ready for Construction - Federal Bridge												
Output Milestone - ROW Ready for Construction - Sheridan Bridge												
Output Milestone - ROW Ready for Construction - Sheridan Station												
Output Milestone - ROW Ready for Construction - CIVIL Flyover												
Output Milestone - ROW Ready for Construction - Burnham Yard Lead												
No - SWB3 - Assef/Tax												
Kipling Bridge - Install Deck Rebar - 1346												
Tennison Ped Bridge - Set Tennison Bridge Survey - 1535												
East Dry Gulch Bridge - Set East Dry Gulch Bridge Survey - 1540												
West Dry Gulch Bridge - Set West Dry Gulch Bridge Survey - 1515												
East Dry Gulch Bridge - Install Access and Channel Crossing - 1540												
Hazel CT - Ped Bridge - Set Hazel Ct Bridge Survey - 1579												
East Dry Gulch Bridge - Install Drop Structure #4 - 1540												
East Dry Gulch Bridge - Form/Pour/Strip-East & West Abutment Diaphragms - 1540												
West Dry Gulch Bridge - Form/Pour/Strip-East & West Abutment Diaphragm - 1515												
West Dry Gulch Bridge - Install Deck Rebar - 1515												
East Dry Gulch Bridge - Bearing Device Type 1 - 1540												
East Dry Gulch Bridge - Install Deck Rebar - 1540												
West Dry Gulch Bridge - Form/Pour/Strip-Concrete Deck - 1515												
West Dry Gulch Bridge - Install In-Bridge Drainage - 1515												
East Dry Gulch Bridge - Install In-Bridge Drainage - 1540												
East Dry Gulch Bridge - Form/Pour/Strip-Concrete Deck - 1540												
FINISH - KIPLING BRIDGE COMPLETE												
DEA to GA and print copies												
RTD to print and distribute 40 sets of drawings												
DTCG to Complete Final IFC Estimate and negotiate												

Internal FasTracks Schedule

WC LONP Early NTP Schedule



Data Date: 01-Dec-08

Page 1 of 3



