

West Rail Line Construction Safety



Pay Attention to Signs!

CONSTRUCTION SAFETY

As a new school year approaches, the West Rail Line wants to remind you that construction is occurring in very close proximity to many of your neighborhoods, parks and schools. Here are a few safety tips to share with your children as they prepare for school this fall:

- Call 911 if you or your child has an emergency or accident due to West Rail Line construction.
- Never play on or around construction equipment.
- Stay out of fenced areas.
- Look out for construction trucks on your streets; they're high-profile and dust can impair vision.
- Always pay attention to warning and safety signage.
- Never go near construction areas after dark. Holes and sharp objects can be obscured.
- Drive slowly and be patient in construction areas.
- Be aware of falling objects, even if they are not directly overhead. Wind can blow them in your direction.
- Stay away from utilities and exposed wires.
- Do not play on or under bridges or near streams or rivers.
- Never play on or around railroad tracks, and never place anything on the track.
- Be aware that snow can hide sharp and dangerous objects.
- Avoid ladders and dangerous areas.
- Always read construction updates and door hangers as they contain important safety and traffic information.



Watch for Trucks!

CONTACT INFO

Contact the West Rail Line PI team to report any safety hazards:

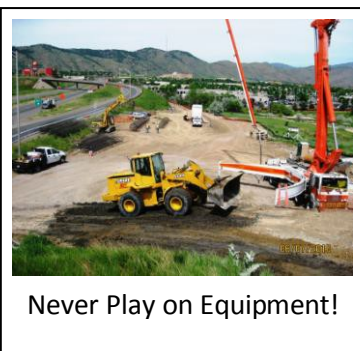
Kathy Berumen

Public Information Manager, Denver Transit Construction Group

Office: (303) 626-6762

Cell: (720) 989-8099

kberumen@dtcgjv.com



Never Play on Equipment!