



Community

Information Line:

303-299-2401

[www.rtd-fastracks.com](http://www.rtd-fastracks.com)



The \$ 635 -million FasTracks West Corridor project consists of constructing a new 12.1-mile, double-track light rail line, extending west from the existing light rail line at Auraria West Station in downtown Denver, through Lakewood along 13th Avenue, continuing along 6th Avenue (U.S. 6) and ending at the Jefferson County Government Center.

## WELCOME

Time is flying by and summer of 2008 is almost here. Construction on the West Corridor has begun! Several years of planning and anticipation are now moving into a more tangible phase, where the drawings and designs are replaced with visible signs of structures and progress. Being informed will make this transition easier. We encourage you to get up-to-date information through our e-newsletter and on the West Corridor Web site at [www.RTD-FasTracks.com](http://www.RTD-FasTracks.com). The West Corridor information phone line will be updated bi-weekly as construction activities develop. Please call 303.299.2000 for information and follow the prompts for West Corridor.

### May 2008

In this issue you will find:

**Kipling Bridge Construction** - Get an update on the construction of the Kipling Street Bridge

**Gulch Bridges** -Find out where construction will begin next

**Lakewood Sanitary Sewer Project** -Get information on the this project, scheduled to start in June

**Utility Relocation Schedule**- Keep abreast of where utility relocations are taking place in your neighborhood

**Subcontractor Corner** -Meza Construction Company

**How Can I Get (or Stay) Involved?** - Find out where to get more information on meetings and events, and the best ways to have your questions answered

### KIPLING BRIDGE CONSTRUCTION

Construction of the Kipling Street Bridge is in full swing. Temporary fencing has been placed around the RTD right-of-way and signage indicating construction activities is evident along Kipling Street. The caissons for the bridge have been drilled and the concrete reinforcements for the foundation of the bridge have been poured.

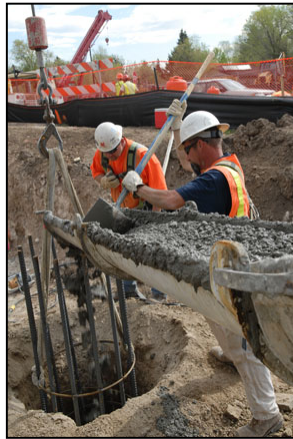


The next phase of construction will be forming and placing the abutment walls, which are the walls that hold up the bridge adjacent to Kipling Street. This work will continue for the next few months in preparation of the placement of girders on Kipling Street. It is currently anticipated that girder placement will begin in late June. The girders are the steel beams that will extend over Kipling and provide the support for the bridge. The girders will be positioned overnight and Kipling Boulevard will be closed that night to ensure the safety of not only the construction workers, but the traveling public as well.

Temporary warning signs will be placed on Kipling giving advance notice of specific dates and times of construction detours. Alternate routes will be advised.

Bridge construction is intricate work, whether it's a large bridge or a moderate-sized bridge like the one that will go over Kipling, which will span 120 feet. The

construction process is just as complex because it must be built strong enough to safely support its own weight as well as the weight of the people and trains that pass over it. The bridge must also be able to withstand natural occurrences that include weathering, earthquakes and strong winds, freezing and thawing.



### **GULCH BRIDGES**

Pedestrian bridges at Wolff Street, Tennyson Street and Hazel Court, and light rail bridges crossing the east and west Dry Gulch will be the next construction activities on the West Corridor light rail line.

The pedestrian bridges in the Denver parks will provide safe walkway solutions over the rail line. They were selected as part of the early work to ease the flow of pedestrian traffic throughout construction of the West Corridor. For safety reasons, all three bridges will take pedestrian traffic over future construction operations. Since traffic loads on pedestrian bridges are small, the design of these bridges isn't quite as complex as bridges carrying heavy automobiles or trains. Their size also provides an opportunity for contractors to be more creative with the structure itself. Their design is also aesthetically pleasing and complimentary to the surroundings. The subcontractor who will be building these pedestrian bridges is Meza Construction. See the Subcontractor Corner article to learn more about this company.

The light rail bridges crossing the east and west Dry Gulch will be built at the same time as the pedestrian bridges. These bridges will carry the light rail trains across the gulch. Edward Kraemer and Sons, the subcontractor building the Kipling Bridge, will construct these light rail bridges as well.

Construction of all five gulch bridges should take five to six months to complete. It is currently anticipated that construction of the gulch bridges will begin in June and be complete by the end of 2008.

#### **LAKWOOD SANITARY SEWER PROJECT**

As part of the ongoing utility relocations in Lakewood, the City will be relocating their sanitary sewer lines along 13th Avenue from Carr Street to Lamar Street. The project will take approximately six months to complete and should begin by early June. The contractor will work in phases, not in all locations simultaneously.

Crews will begin by setting up bypass pumping and traffic control around the area. Once that is complete, they will remove the asphalt and excavate to replace the old clay pipes with larger plastic pipes. Once the pipes are replaced, the sewer services will be reconnected, the area backfilled and the asphalt patched. Lakewood's contractor will also replace the mains and service lines crossing the West Corridor rail alignment and fill the old sewer mains and manholes.

Residents along 13th Avenue can expect short term disruptions to traffic and some short term service interruptions while the contractor reconnects sewer lines. If you have any questions on this relocation, please contact Daniel Steinshouer, Project Inspector at 303.987.7928 or email him at [danste@lakewood.org](mailto:danste@lakewood.org). Steven Steinberger is the Project Engineer and can be reached at 303.987.7935 or by email at [steste@lakewood.org](mailto:steste@lakewood.org)

#### **UTILITY RELOCATION SCHEDULE**

In an effort to keep you up to date with the latest information regarding utility relocations, the West Corridor PI team has developed an easy to follow schedule showing areas of utility relocation activity. This schedule will be updated bi-weekly and will help residents identify which utility company is working in their neighborhood. To view the Utility Relocation Schedule, [click here](#).

#### **SUBCONTRACTOR CORNER**

Meza Construction Company, a local DBE firm, will be the subcontractor building the pedestrian bridges at Wolff Street, Tennyson Street and Hazel Court. Meza provides innovative ideas, value engineering and problem-solving in a partnership environment. Their most recent project was at the Ritz Carlton Hotel in downtown Denver. Their work included the completion of specialty flatwork, landscape boxes and permeable pavers in the drive-through entrance. These pavers are the first such installation in downtown Denver. Meza also worked on the signature remodel of the Denver Art Museum. Included in their scope of work on the museum were plaza paving, sidewalks, stairs and curb and gutter. In a collaborative effort with other local firms, Meza assisted in the creation of the water feature outside the museum. Their innovative craftsmanship is visible on several projects throughout the Denver metro area.

Brothers Chris and John Meza provide a staff of experienced and skilled concrete carpenters and form-setters dedicated to delivering projects within the strict tolerances set forth by the industry. Their valuable work experience includes basic foundations, caissons and piling, linear and curved retaining walls, heavy load-bearing bridge abutments and reinforced elevated bridge decks.

Meza Construction Company is extremely active in the Denver community. Chris Meza serves on the Board of Directors of the Denver Museum of Contemporary Art and the company is active with the Cystic Fibrosis Foundation. Meza is also a member of several local construction organizations.

RTD and Denver Transit Construction Group are excited to work with Meza Construction and their qualified team. Pedestrian bridge work will begin sometime in early June and Meza Construction will be on-site delivering a quality installation.

#### **HOW CAN I GET (OR STAY) INVOLVED?**

One of the best ways to get information that will help you stay involved in the West Corridor construction phase is to ensure we have your e-mail address. Our periodic e-mails will provide you with information essential to being an active participant. As the project evolves, it will be important to keep all members of the community informed on construction activities. Tell your friends and neighbors to sign up on our e-mail list to receive up-to-date information, and if your e-mail address changes, please notify us.

Don't forget to visit our Web site where you'll find all the latest information about the West Corridor.

Where Can I Get More Information?

Web site: [www.RTD-FasTracks.com](http://www.RTD-FasTracks.com)

E Mail: [WestCorridor@RTD-FasTracks.com](mailto:WestCorridor@RTD-FasTracks.com)

Phone: Kathy Berumen, 303-299-2175

Brenda Tierney, 303-299-2401

Mail: RTD West Corridor

1560 Broadway #700

Denver, CO 80202