

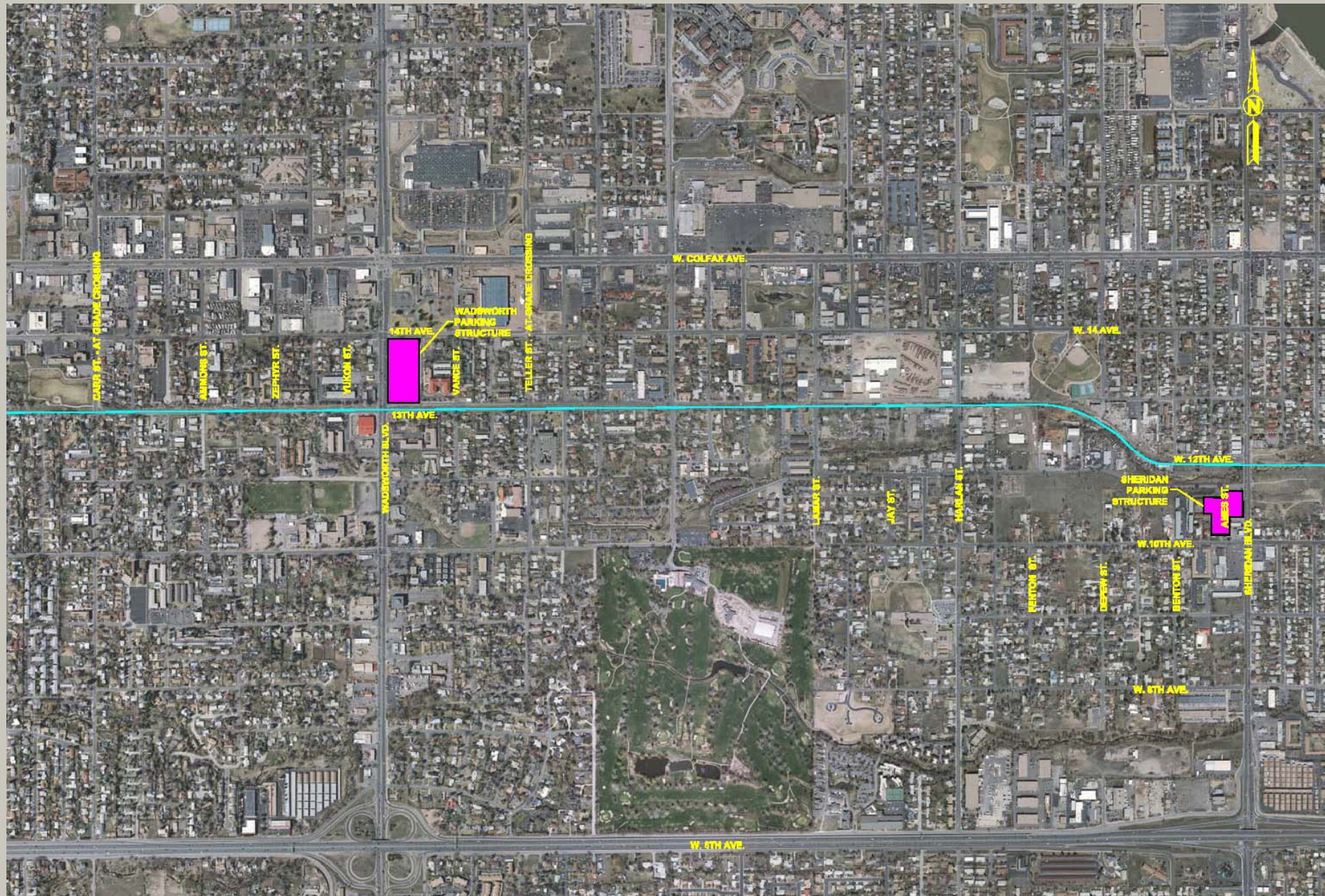
*WADSWORTH PARKING  
STRUCTURE*

*PUBLIC INFORMATION  
MEETING*

*Jan. 06, 2011*

*6:00pm - 8:00pm*

# Wadsworth Parking Structure



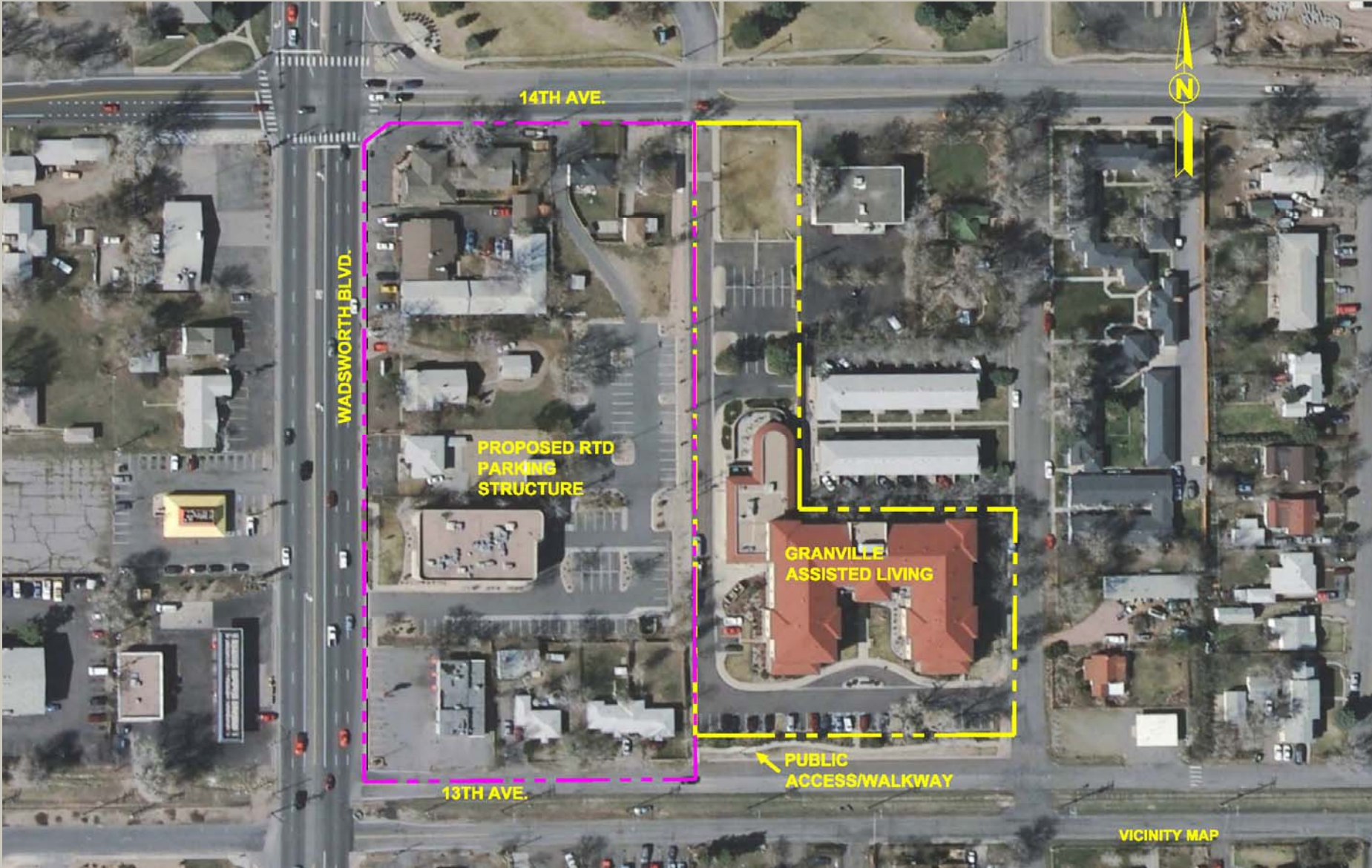
Project Area

## West Corridor Implementation Status

- Bridges 90% complete
- Walls 70% complete
- Drainage 96% complete
- Stations 12% complete
- Track 15% complete

Overall West Corridor Progress – 69% complete

# Wadsworth Parking Structure



## Project Elements

Structure and amenities include:

1. 4-story 1000-space parking garage
2. Bus stops along Wadsworth Blvd.
3. Drop-off/pick-up area within structure
4. Detention & water quality pond
5. Roadway improvements/Stakeholder Concerns
6. Pedestrian plaza and urban site improvements (includes bike and scooter parking)
7. Ped Connection to West Corridor LRT station
8. PROVISION for future solar panels & Plug-in Hybrid Electric Vehicles (PHEV)

## Project Elements

### Sustainability

1. Encourage Use of Recycled Material During Construction
2. Use of Energy-Efficient Lighting Systems
3. Low Water-Use Landscaping
4. Stormwater Treatment Facility
5. Natural Lighting for the Cascading Staircase
6. Bicycle Parking & Lockers
7. Encourage Use of Locally-Produced Materials
8. PROVISION for future solar panels & Plug-in Hybrid Electric Vehicles (PHEV)

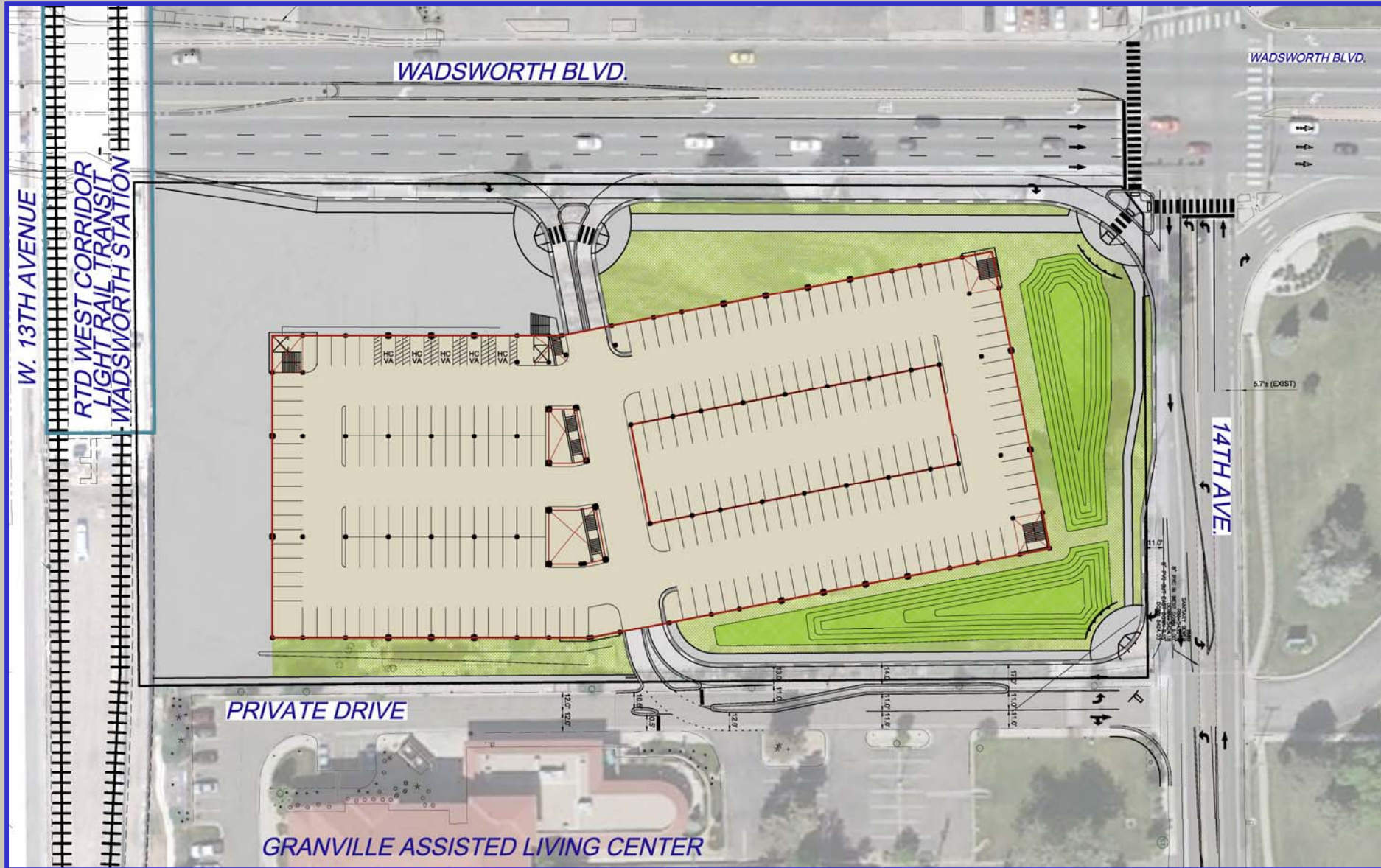
## Prior Public Involvement

EIS Process – Urban Design Committee  
July 1, 2010 Public Information Meeting

### Common Concerns

- ✓ Neighborhood impacts from traffic
- ✓ Structure should fit with the neighborhood
- ✓ Easy access to LRT Station
- ✓ Bicycle & pedestrian access
- ✓ Public plaza area
- ✓ Good environmental design
- ✓ Security Measures
- ✓ Functional Art
- ✓ Use of Brick
- ✓ Potential for Small Businesses

# Preferred Alternative - "Pivot"



## Design Elements

### Architecture

- Textured & Layered Façade
  - Elevator/Stair Cores Anchor the Corners
  - Cascading Staircase to Plaza
- 360° Architecture
  - Building Façades Reflect Adjacent Use
  - Common Elements on All Sides
- Human-Scale Ground Floor Treatment
- Clearly Defined Entrances

# Wadsworth Parking Structure



Wadsworth Blvd SW View

# Wadsworth Parking Structure



Plaza View

# *Wadsworth Parking Structure*



SE View

# *Wadsworth Parking Structure*



NE View

## Design Elements

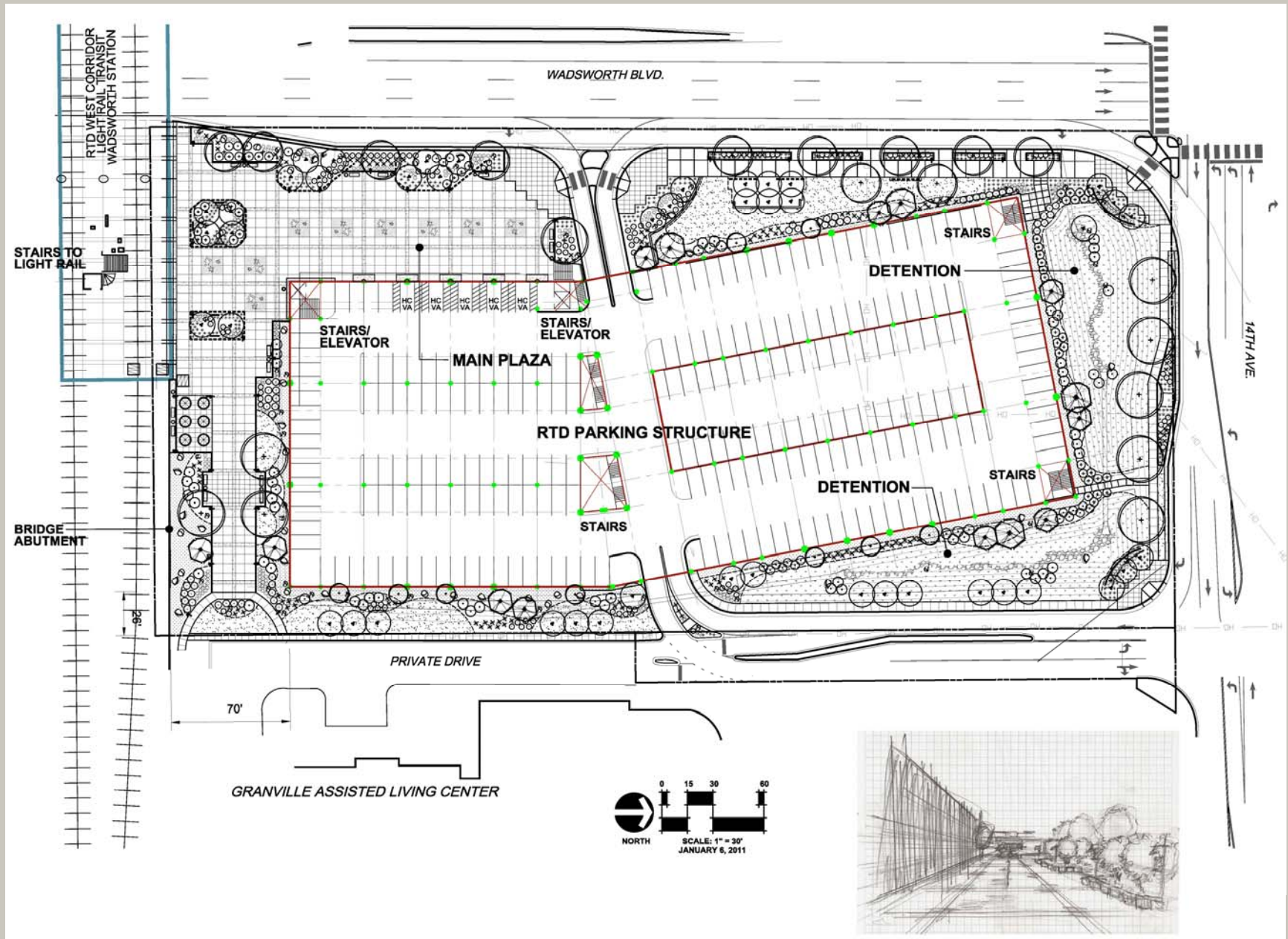
### Landscape

- **Deciduous & Evergreen trees**
- **Ornamental tree groves**
- **Deciduous & evergreen shrubs**
- **Sodded and seeded open areas**
- **Pea gravel and Wood mulch**
- **Accent boulders –Cherokee boulders**
- **Underground irrigation**

### Urban Design

- **Raised planters –Brownstone boulders**
- **Scored concrete Plaza–accent banding**
- **Bike and scooter parking**
- **Bike lockers**
- **Benches & trash receptacles**
- **Pedestrian lighting**

# Landscape / Urban Design Elements



## Design Elements

### Plaza

- Bicycle Parking – Trees & Lockers
- Benches & Seat Walls
- Scored concrete with accent banding
- Historical Elements – Orchards
- Functional Art Elements

# Landscape / Urban Design Elements

**CHEROKEE BOULDERS**



**BROWNSTONE BOULDERS**



## Next Steps

- City's Site Planning Approval Process – 1<sup>st</sup> Quarter 2011
- Issue Design/Build RFQ – Early 1<sup>st</sup> Quarter 2011
- Issue Design/Build RFP - 1<sup>st</sup> Quarter 2011
- Construction Completion – Late 2012
- West Corridor opening – Late May 2013

## Questions and Answers

For more information,

- call Mike Turner at 303-299-2787

or

- e-mail [westcorridor@rtd-fastracks.com](mailto:westcorridor@rtd-fastracks.com)