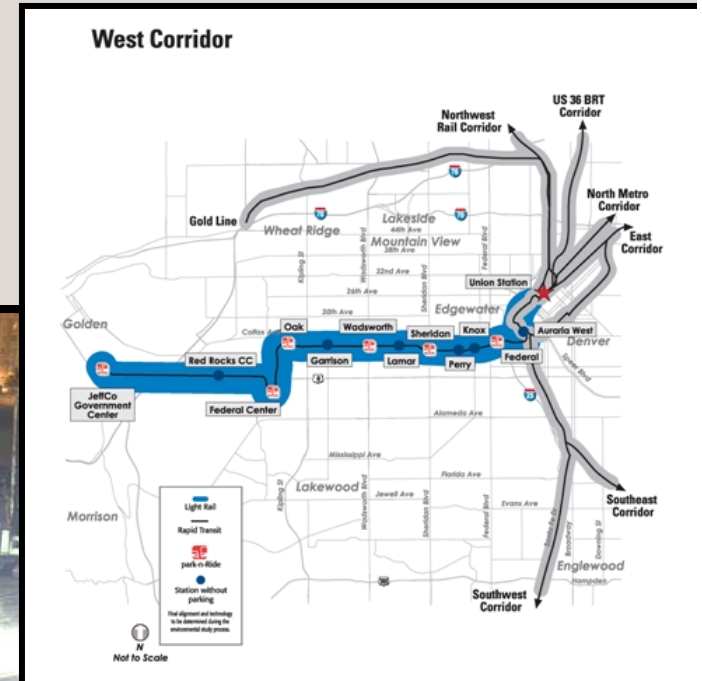
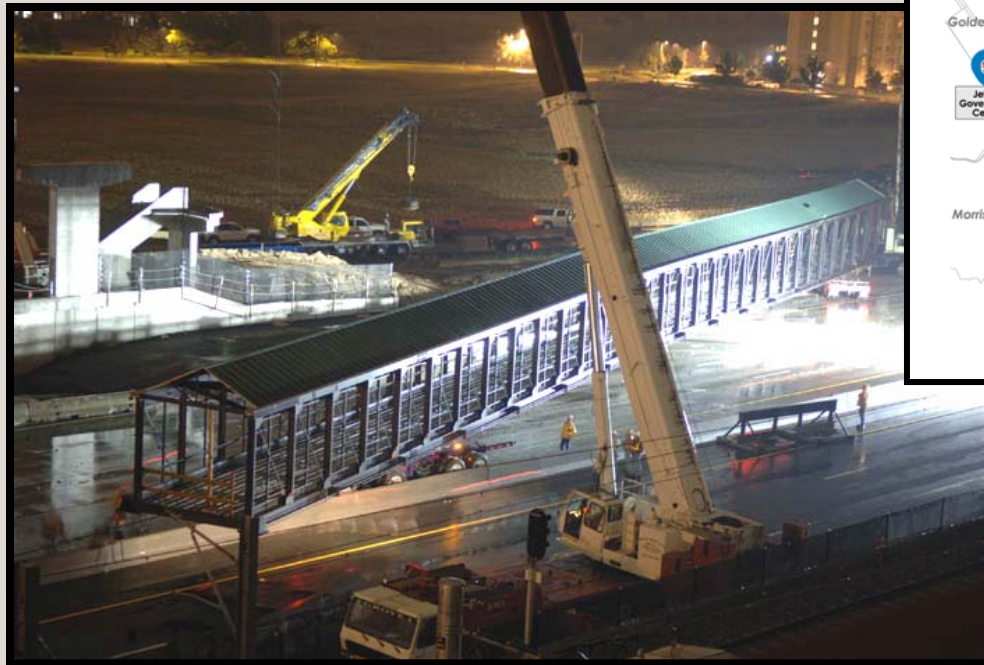


West Corridor Elected Officials Briefing

January 11, 2008



State/Federal Requirements

- **Dust/Dirt/Debris Mitigation**
- **Storm Water Management**
- **Vehicular Traffic Management**
- **Pedestrian Safety in Work Zones**
- **Public and Worker Safety Program**

Conduct of Construction Plan

Local/Jurisdictional Requirements

- **Duration of Work within Work Zones**
- **Construction Equipment/Materials Storage**
- **Coordination of Work with Public (including utility disruptions)**
- **Protection of Private & Public Properties**
- **Construction Restrictions during Special Events**
- **Noise and Vibration Control**
- **Work Hours including # of Shifts and Weekends**
- **Temporary Road Closures or Detours**
- **Emergency Vehicle Provisions**
- **Maintenance of Access to Properties**
- **Security and Maintenance of Construction Work Zones**
- **Parking Requirements**

RTD Requirements

- **Construction Phasing**
- **Field Office Needs**
- **Sequence of Work**
- **Staging (Equipment Storage)**

Railroad Requirements

- **Special Steps to Insure Safety during Track Outages**
- **Railroad Coordination & Flagging**

This will apply to the railroads at the east end of the alignment

Conduct of Construction Plan



For more information please contact:

John West

Project Manager

Denver Transit Construction Group

303.299.6191

John.west@rtd-fastracks.com

Kathy Berumen

PI Account Manager

Xcelente Marketing Group

303.299.2175

Kathy.berumen@rtd-fastracks.com