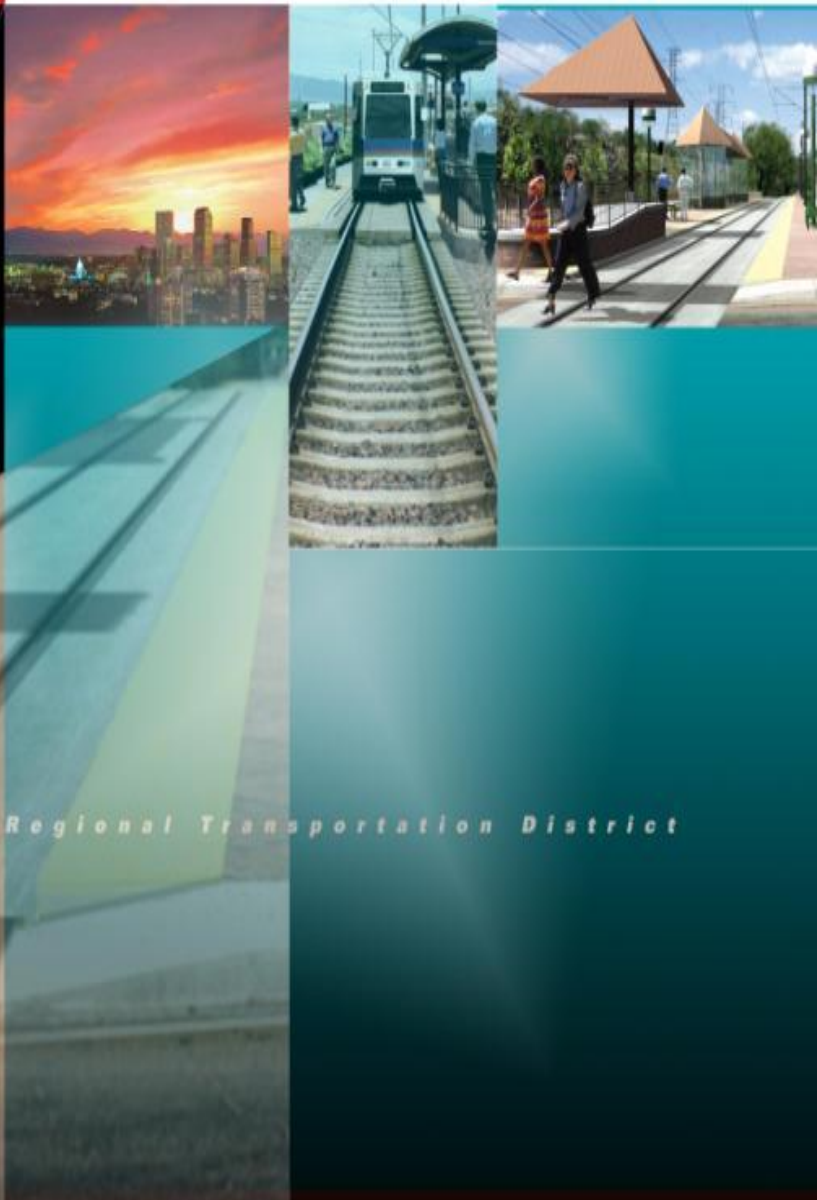




West Corridor LRT Project Progress Report



Regional Transportation District

TABLE OF CONTENTS

LIST OF ACRONYMS	<i>ii</i>
Overview	1
PROJECT MAP	2
Discipline Summary	3
Systems.....	3
Utilities.....	4
Drainage.....	6
ROW.....	7
Civil Construction.....	8
Structural Construction.....	9
Quality Assurance.....	10
Public Information.....	11
Risk Management	12
DBE	17
Cost.....	18
Schedule Summary.....	20

LIST OF ACRONYMS

CCD	City and County of Denver
CDOT	Colorado Department of Transportation
CEI	Cost Effectiveness Threshold
CMGC	Construction Manager/General Contractor
CNPA	Concurrent Non Project Activity
COL	City of Lakewood
CPUC	Colorado Public Utilities Commission
CPV	Central Platte Valley
CSP	Construction Safety Program
DEA	David Evans and Associates
DBE/SBE	Disadvantaged Business Enterprise/Small Business Enterprise
DTCG	Denver Transit Construction Group
EA	Environmental Assessment
EOL	End of Line
FD	Final Design
FDC	Final Design Consultant
FFGA	Full-Funding Grant Agreement
FONSI	Finding of No Significant Impact
FRA	Federal Railroad Administration
FRSC	Front Range Systems Consultant
FTA	Federal Transit Administration
GMP	Guaranteed Maximum Price
GSA	Governmental Services Administration
IGA	Inter-governmental Agreement
LONP	Letter of No Prejudice
LRT	Light Rail Transit
LRV	Light Rail Vehicle
NFPA	National Fire Prevention Association
NTP	Notice to Proceed
OCS	Overhead Catenary System
PE	Preliminary Engineering
PI	Public Involvement
PIC	Public Information Consultant
PSC	Program Support Consultant
PMOC	Project Management Oversight Contractor
PMP	Project Management Plan
PPI	Public-Private Initiative
QA/QC	Quality Assurance / Quality Control
QMC	Quality Management Consultant
QMO	Quality Management Oversight
QMP	Quality Management Plan
QPRM	Quarterly Progress Review Meeting

LIST OF ACRONYMS (Cont.)

RA	Risk Assessment
RAMP	Real Estate Acquisition and Management Plan
RFQ	Request for Qualifications
RFP	Request for Proposals
RFMP	Rail Fleet Management Plan
ROD	Record of Decision
ROW	Right of Way
RTD	Regional Transportation District
SCC	Standard Cost Categories
SCP	Safety Certification Program
SSOA	State Safety Oversight Agency
SSMP	System Safety Management Plan
SSPP	System Safety Program Plan
SSPS	System Safety Program Standards
SSWG	System Safety Working Group
TEM	Technical Evaluation Memorandum
TOD	Transit Orientated Development
T-REX	Transportation Expansion Project
UDFCD	Urban Drainage Flood Control District
VE	Value Engineering
WBS	Work Breakdown Structure

MONTHLY OVERVIEW

During October, the West Corridor FasTracks Project continued to progress on schedule and within budget.

Noteworthy Accomplishments are as follows:

The CLOMR was completed in October as well as the Kipling Bridge Construction. Remaining LONP work is ongoing.

Critical Work continues to be the FFGA, acquisition of Right-Of-Way parcels, and utility relocations along the corridor.

East and West gulch bridges—east of Sheridan are under construction. Foundations and abutment walls constructed.

As of October 2008, the status of Change Control is as follows:

TYPES OF CHANGES	AMOUNT
• Design Work Orders:	0
• Design Change Orders:	18
• Design Pending Change Orders:	0
• Construction Work Orders:	0
• Construction Change Orders:	14
• Construction Pending Change Orders:	14

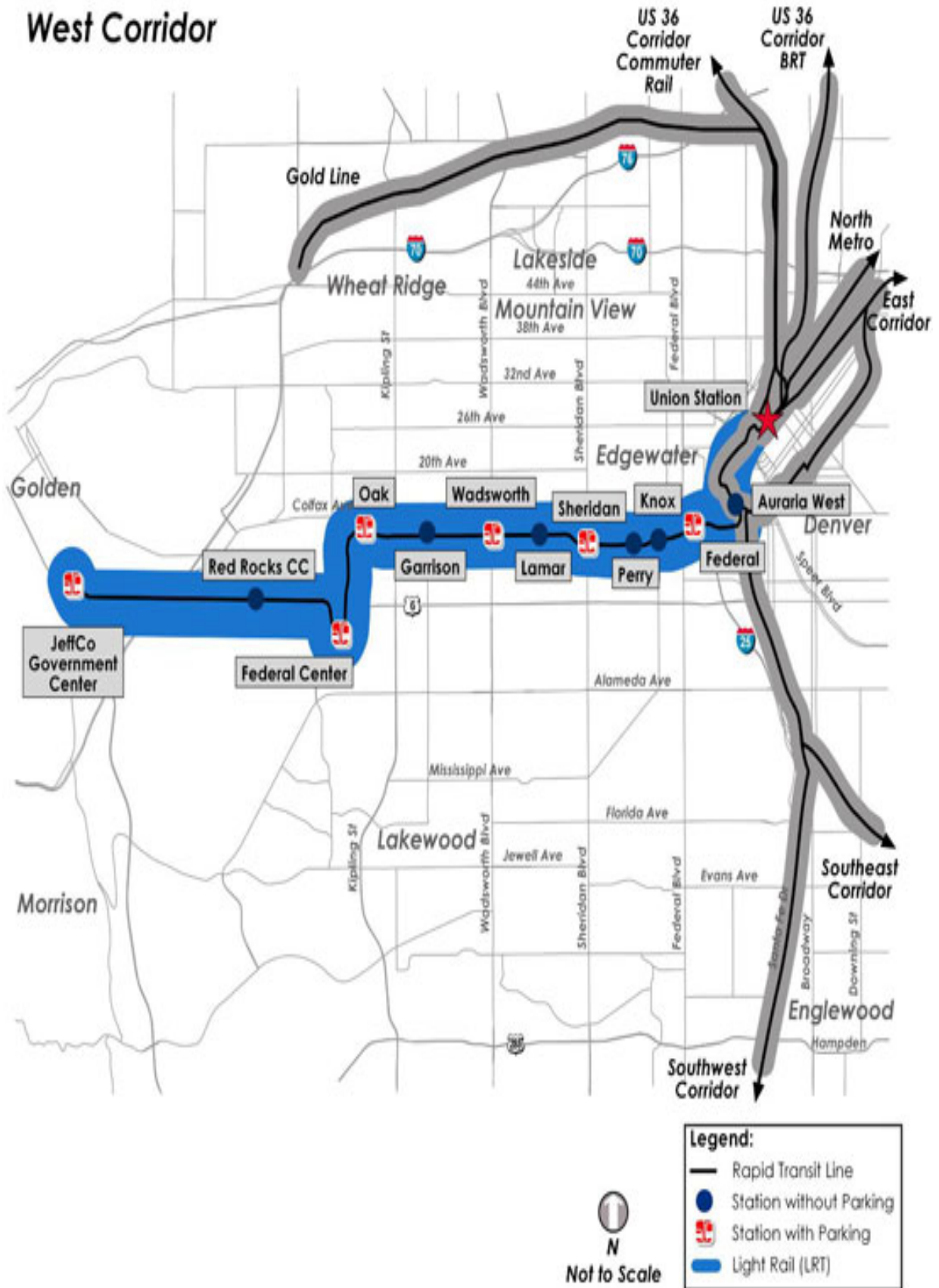
- Change Orders executed in the month ending October 2008 with a cost in excess of \$100,000.

NONE

- Pending Changes in review during the month of October 2008, with costs in excess of \$100, 000.

PCN	DESCRIPTION	AMOUNT
CO-013	Utility Relocation	\$ 6,688,748
CO-014	Utility Relocation	\$ 889,056
CO-015	Drainage	\$ 7,543,850
CO-016	Kipling Bridge Walls	\$ 3,328,983
CO-017	Wall Installation at Dry Gulch East/West	\$ 1,584,295

West Corridor



Utilities

Design:

- RTD staff has prepared 175 work orders for utility relocations to be completed by the utility owners. The estimated total number of utility owner work orders for this project is 200. The work orders have been prioritized by completing the most complicated relocation work and those most critical to the contractor schedule, as the highest priority. All remaining work orders for relocating dry utilities will be completed by December 2008.
- All work orders have been written and submitted to Consolidated Mutual Water Company (CMWC). RTD has two remaining work orders to execute with CMWC. All other work orders are in design, protect in place or construction.
- All of the work orders for relocating Comcast facilities have been written and are in design, protect in place, or construction.
- RTD needs to write approximately 10 work orders to Xcel – Electric Distribution for utility relocation design. All other work orders are in design, protect in place, or construction.
- RTD needs to write work order to relocate the Xcel Electric Transmission facilities from east of Federal to the Platte River. All other work orders are in design, towers on order, or protect in place.
- RTD needs to write approximately six work orders to Xcel – Gas Operation for utility relocation design. All other work orders are in design, protect in place, or construction.
- RTD needs to write six work orders to Qwest Communications for utility relocation design. All other work orders are in design, protect in place, or construction.
- RTD continues to meet with Denver Transit Construction Group (DTCG) to identify early utility work that they can begin and coordinate with other utility owner relocations. RTD designer DEA, is making revisions to some of the drawings on the accelerated set of utility and drawings to address stakeholder comments.
- All known dry utilities requiring relocation design will be completed by December of 2008.

Construction:

- Xcel has completed the relocation construction from Garrison to Upham and has completed energizing the relocated eclectic facility. Xcel is wrecking out the power poles located in 13th Avenue from Garrison to Upham. Xcel will start relocating the overhead electric facilities located along 13th Avenue Upham to Sheridan. Xcel Energy-Electric will complete all known electric relocation Construction by April 2009 with the exception of electric construction that requires construction coordination with DTTCG.
- Xcel Energy-Gas Operations will complete all known gas relocation construction by April 2009 with the exception of gas construction that requires construction coordination with DTTCG.
- Qwest has completed phase one of the underground relocation construction along 14th Avenue from Independence to Wadsworth. Phase two of the relocation is ongoing and consists of the pulling of copper, fiber optic cable, and cold splicing of all copper and fiber optic facilities. Qwest Communication will complete all known communications relocation construction by August 2009, with the exception of communication construction that requires construction coordination with DTTCG and the relocation along 13th Avenue from Independence to Wadsworth (see concerns).

Utilities Continued

- Comcast continues to relocate their overhead facilities along 13th Avenue from Independence to Harlan. Comcast will complete all known relocation construction by June 2009, if necessary, to accommodate the LRT construction.
- The City of Lakewood contractor has completed the sanitary sewer relocation construction from Harlan to Saulsbury and continues construction west of Saulsbury. The City of Lakewood contractor has completed the boring of the sanitary sewer pipe under Wadsworth. The COL contractor brought on a second crew to connect the sanitary sewer services to the main sanitary sewer pipe, while the other crew continues with the main sanitary sewer pipe construction.
- CMWC will relocate their water lines in conjunction with the City of Lakewood's Sanitary Sewer Relocation Project. CMWC will complete all known utility relocation construction by April 2009, with the exception of water line construction that requires construction coordination with DTCG.
- Xcel forces have constructed the caissons for the transmission towers located on the west side of Sheridan, east side of Sheridan Tennyson, and the two caissons for the towers located between Perry and Newton. Xcel's crews have constructed two of the Sheridan transmission towers. The remaining transmission towers construction is scheduled to be completed by November 2008.
- Level 3 will complete all known relocation construction by December 2008, if necessary, to accommodate LRT construction.
- Adesta will complete all known relocation construction by summer 2009, if necessary to accommodate LRT construction.

FORECASTED WORK ORDERS	TOTAL # OF WO WRITTEN	TOTAL # WO NEGOTIATED	WO DE-SIGN STARTED	WO DESIGN COMPLETED	WO CONSTRUCTION STARTED	WO CONSTRUCTION COMPLETE	% DESIGN STARTED	% CONSTRUCTION STARTED
200	175	116	120	82	70	42	60%	35%

Areas of Concern:

- The schedule that Qwest has provided for the relocation of their duct bank in 13th Street is not acceptable for the overall project schedule. RTD staff and DTCG are working together to design a plan that will allow DTCG to construct around Qwest facilities to minimize or eliminate impacts to DTCG construction schedule.

Drainage

This Month:

- Early work construction plans for Drainage and Utilities have been approved by the City of Lakewood, Jefferson County, and the City of Golden. Storm sewer construction has begun for the early work.
- The City of Lakewood betterment cost estimate for the betterment costs of the storm drainage systems at the Richey Park Outfall, Pierce Street System, and the Lamar Street System, was submitted to and approved by Lakewood. An MOU has been written for this work between RTD and Lakewood. An IGA will be required.
- Construction of Drop Structure No. 4 is anticipated to start in November. IFC plans have been finalized but need approval by the Urban Drainage and Flood Control District and the City and County of Denver.
- RTD staff continues to negotiate the terms of agreement with representatives of the Agricultural Ditch and Reservoir Company and the Colorado Department of Transportation. It is anticipated that the agreement will be finalized by the end of November.
- RTD staff continues to negotiate the terms of agreement with representatives of the Wight Lateral Irrigation Ditch. It is anticipated that the agreement will be finalized by the end of the year.
- RTD staff is working with CDOT concerns with MS4 requirements for West Corridor work within CDOT right-of-way.

Next Month:

- RTD staff is working with stakeholders to address any final comments and concerns on the 100% construction plans and obtain approvals on the final plans.
- RTD staff is reviewing the final drainage report for the West Corridor, that was received at the end of October.

Areas of Concern:

- IFC plans are contingent upon the resolution of stakeholder comments and concerns.

ROW

This Month:

ROW Planning

- Receive and review conformed ROW plans from DEA in order to provide corrections for final delivery.
- Provide information regarding project status and activities to property owners, legal representatives, internal staff, and media, as required.

Property Acquisition and Relocation

- Closings have occurred on four (4) acquisitions. RTD has received immediate possession of four (4) additional parcels. A settlement is pending on one (1) parcel and immediate possession hearings have been scheduled in Denver and/or Jefferson County Courts for two (2) additional parcels.
- Relocation consultants are completing the determination of eligibility for relocation assistance for tenants and/or owners related to parcels currently owned or being acquired by RTD and assisting residents with eligibility for relocation benefits.
- The RTD Board of Directors passed Resolution No. 15 Series of 2008 on October 28, 2008, a supplemental property acquisition resolution certifying properties, as necessary, for the West Corridor project.

Property Management

- Consultant services are providing property management services for properties now owned by RTD.

Next Month:

ROW Planning

- Will begin issuing Notices of Intent to Acquire and making appraisal assignments.
- On-going scheduling discussion with internal and CMGC staff.

Areas of Concern:

- None

Structures Construction

This Month:

- The Kipling Bridge punch list items were being worked on but were not finished.
- The West Gulch abutments and wingwalls were being formed up and poured. This included both abutments 1 & 2.
- East Gulch abutment 2 was formed/poured and stripped.
- The 84" caisson at Pier 2 for Hazel Court pedestrian bridge was drilled and cast.
- Channel work in Dry Gulch at the West Gulch structure around abutments 1 and 2 was done to ease construction of the bridge structure.
- Channel and grading work around Dry Gulch at the East Gulch structure was done.
- The Wolff pedestrian bridge was fabricated at Big R. The fabrication shop is located in Greeley, Colorado.
- A QA process audit by Al Eastwood was done on Fought and Company's fabrication shop. They are fabricating the Tied arch bridge that is going to span over 6th Avenue. An oversite QA inspection by Edward Kramer and Sons representatives was also done on Fought and Company, in their Oregon shop.

Next Month:

- The prestressed concrete girders will be set on the East and West gulch structures.
- The Wolff pedestrian bridge superstructure will be set.
- The East and West Gulch bridge decks will be formed and cast.
- The abutments at Hazel Court pedestrian bridges will be poured.
- The repair procedure for the abnormalities on Tennyson's pier 2 will be designed and submitted.
- Steel fabrication shop drawings are being developed for both the South Platte River Crossing structure and the 6th Avenue tied arch.

Areas of Concern:

- None

Civil Construction

This Month:

1. Under the Accelerated Utility and Drainage Package
 - Substantially completed replacement of existing LWSD 8" VC sanitary sewer crossing (VC to C-900) at approximately EB STA 1352+90;
 - Installed approximately 650 LF of 24" RCP storm sewer (E. Kipling to Pikeview) from approximately EB STA 1348+00 to EB STA 1354+50 including Manholes 296/297 and FES with outlet protection; and
 - Initiated preconstruction planning, coordination, and permitting activities for upcoming utility and drainage work at Holland Street, Collins Street, and Quail Street.
2. Continue preconstruction planning, coordination, and permitting activities for the upcoming Gulch Grading, Gulch/Kipling Walls, Jeffco Package, 60" ADARC Line, and Knox Court CBC work.

Next Month:

- Continue Accelerated Utility and Drainage work planning/coordination/permitting/construction at Holland Street, Collins Street, and Quail Street. Anticipate initiation of field work in late October.
- Continue preconstruction planning, coordination, and permitting activities for the upcoming Gulch Grading, Gulch/Kipling Walls, Jeffco Package, 60" ADARC Line, and Knox Court CBC work.

Areas of Concern:

- None

Systems

This Month:

- Reviewed final QC plans for the combined Stray Current Simulation and Site Survey Report.
- Coordinated with civil subcontractor Geocal to obtain soil resistivity measurements and the revised site for TPSS 54 and confirmed geotech information is available for all other TPSS sites.
- Evaluated possible cost savings on the overhead contact system which might be obtained by the use of a single pole with twin cantilevers at overlaps, rather than the two-pole design currently proposed.
- Evaluated possible cost savings on OCS system by replacing some of the new W section OCS poles with tubular poles which will be obtained from the Denver Union Station light rail modifications.
- The Systems design contractor evaluated possible cost savings on the overhead contact system which could be obtained by changing the surge arrester spacing from 500' to 1000'. This change has been approved by RTD's Rail Operations Department based on operational experience with similar spacing on other corridors.
- We have been advised that there is now only a single domestic supplier for the Bronze 80 type contact wire presently specified in the design. A review of the OCS design has been initiated to determine what, if any, design changes might be required if the Bronze 80 wire were to be replaced with hard-drawn copper.
- Potential ROW issues for the traction power conduits at TPSS 54 were resolved.
- Resolved differences between 90% and 100% signal design.
- Cost estimated for a modified SCADA and communications system were received from the Systems construction contractor. This modified approach will, we believe, satisfy the operational requirements of the local authorities at significantly reduced cost.

Next Month:

- The West Corridor Project Manager is expected to make a decision on the implementation of the modified SCADA and communications system.
- Soil resistivity measurements and other geotechnical testing will be performed at the TPSS 54 site.
- The document flow for Systems submittals and requests for information from the contractor, will be finalized.

Areas of Concern:

- None

Quality Management

This Month:

- The RTD FasTracks team has implemented a systematic quality management oversight (QMO) program based on the FTA Quality Assurance/Quality Control Guidelines, and the international standard for quality systems, ISO 9001. RTD's Quality Management system is described in the RTD FasTracks *Quality Assurance Program Plan*. Specific processes are further described in the *Quality Oversight Program Manual*, and accompanying procedures.
- In October 2008, Kumar and Associates continued split sampling/testing of concrete and began split sampling/testing for soil backfill. Kumar submitted a second draft of the Owners Verification Testing Program Manual to receive RTD review and input. This manual describes the types and processes for materials testing services to be employed on the West Corridor LRT Project as well as the overall FasTracks Program.
- The weekly Quality Team meetings and verification inspections of the contractor's early construction work continued in October in accordance with the RTD Quality Oversight Program Manual. Results of RTD verification inspections are communicated to the contractor, and tracked within RTD's Quality Management Oversight database to ensure any nonconformances are corrected to RTD's satisfaction and closed.

Next Month:

- Complete RTD review of the OVT Program Manual

Areas of Concern:

- None

Public Information

This Month:

- Residents along 13th Avenue are being directly impacted by construction in a few places, both with the utility relocation and the early work from the contractor. They have also received notices alerting them to right-of-way impacts on their properties.
- American West, working under Denver Transit Construction Group on the West Corridor build-out, is responsible for the storm drain and sewer system upgrades along the 13th Avenue corridor. While on-site at 13th and Pikeview, they were commended by residents for their professionalism, cooperation, and genuine interest in making the construction process easier for the community. American West went above and beyond their responsibilities as a subcontractor by repairing damages to a home that were caused by another contractor working for a utility company. Their goal was to foster good will and team spirit among the many players that will be working together on this project.
- October 2, 2008 The Lakewood Collaborative Meeting
- October 9, 2008 Morse Park Neighborhood Meeting
- October 10, 2008 Elected Officials Meeting
- October 15, 2008 eNewsletter Distributed
- October 21, 2008 Meeting with Bill Spriggs, construction contact from the Eiber Neighborhood
- October 23, 2008 Meeting with Councilman Paul Lopez
- October 28, 2008 Met with Mr. Roberts about property damage (Pikeview and 13th).
- October 29, 2008 Pre-letters were mailed to all residents along the corridor that would have right-of-way impacts (either through acquisition or permanent easement).
- October 30, 2008 Notified Patricial Filloon that her fence needs to be moved off RTD right-of-way, as construction is imminent.

Next Month:

- November 3, 2008 Beth Jacobs High School
- November 4, 2008 Met with Chris and JB Baer about construction impacts
- November 5, 2008 Press Release for Wolff Street Pedestrian Bridge
- November 10, 2008 St. Anthony's Hospital
- November 11, 2008 Distribute Door Hangers for Quail Sanitary Sewer Work
- November 14, 2008 Elected Officials Briefing
- November 17, 2008 eNewsletter Distributed
- November 18, 2008 Distribute Door Hangers for Collins/Simms Sewer Work
- November 25, 2008 West Corridor Team/Stakeholders Welcome

Areas of Concern:

- None

RISK MANAGEMENT SUMMARY

In collaboration with the FTA and PMOC , RTD has established a Risk Management Program which includes implementing the Risk Management Plan (RMP) and Contingency Management Plan (CMP). With these strategies. the West Corridor Risk Management Team as developed procedures to identify, analyze, implement mitigation, and manage risk.

The **Contingency Drawdown Chart** on the following page, shows the West Corridor has spent none of the total contingency account of \$44,282,416 which is 0% of the total contingency. Currently the West Corridor is 58% above the minimum contingency requirement of \$28,032,787, and within the appropriate contingency limits.

The **Risk Register**, on page 13, shows that the West Corridor has identified 28 Risks, 3 new this month.

# of Low Risk	# of Medium Risk	# of High Risk
9	15	4

* Based on Likelihood to occur, cost impact, schedule impact

Newly Identified Risks:

- SCC40-24 PUC Application
- SCC40-25 Hazmat at Burnham Yard Lead
- SCCTC-27 Storm water/Drainage Issues at Cold Springs Parking/Federal Center Parking

Focused Risks:

The RMT has focused their efforts on three risks that are active. Design Errors (SCC PW-01) has a level High risk. This risk takes into account any changes from the 90% drawings that were used as bid documents for the hand shake agreement and the complete IFC drawings. It also takes into account any missing stakeholder comments. Further along in construction the contingency budget is to account for any design errors/omissions identified during construction. Mitigation efforts are in place. WC had held off the issuance of IFC Drawings until all stakeholder comments are incorporated.

ROW is critical to the start of construction for the West Corridor, and is given a level High risk. To mitigate ROW risks the RMT has had DTCG Review ROW drawings for removal or reduction in ROW, based on construction work-arounds. Second, in conjunction with DTCG ROW parcel sections have been given priority levels. Third, RTD and DTCG are currently assessing construction re-sequencing and construction phasing opportunities as means of potential mitigation measures.

Storm water/Drainage Issues at the Federal Center Parking. Is new this month. The risk assessment and mitigation opportunities will be developed in the next update.

RISK MANAGEMENT SUMMARY Continued

Risks Mitigated:

- SCCTC-26 RTD may not use Aardex for the Federal Center Parking Structure
- SCCTC-08 Dry Utilities and CMGC Wet Utilities may cause delays.

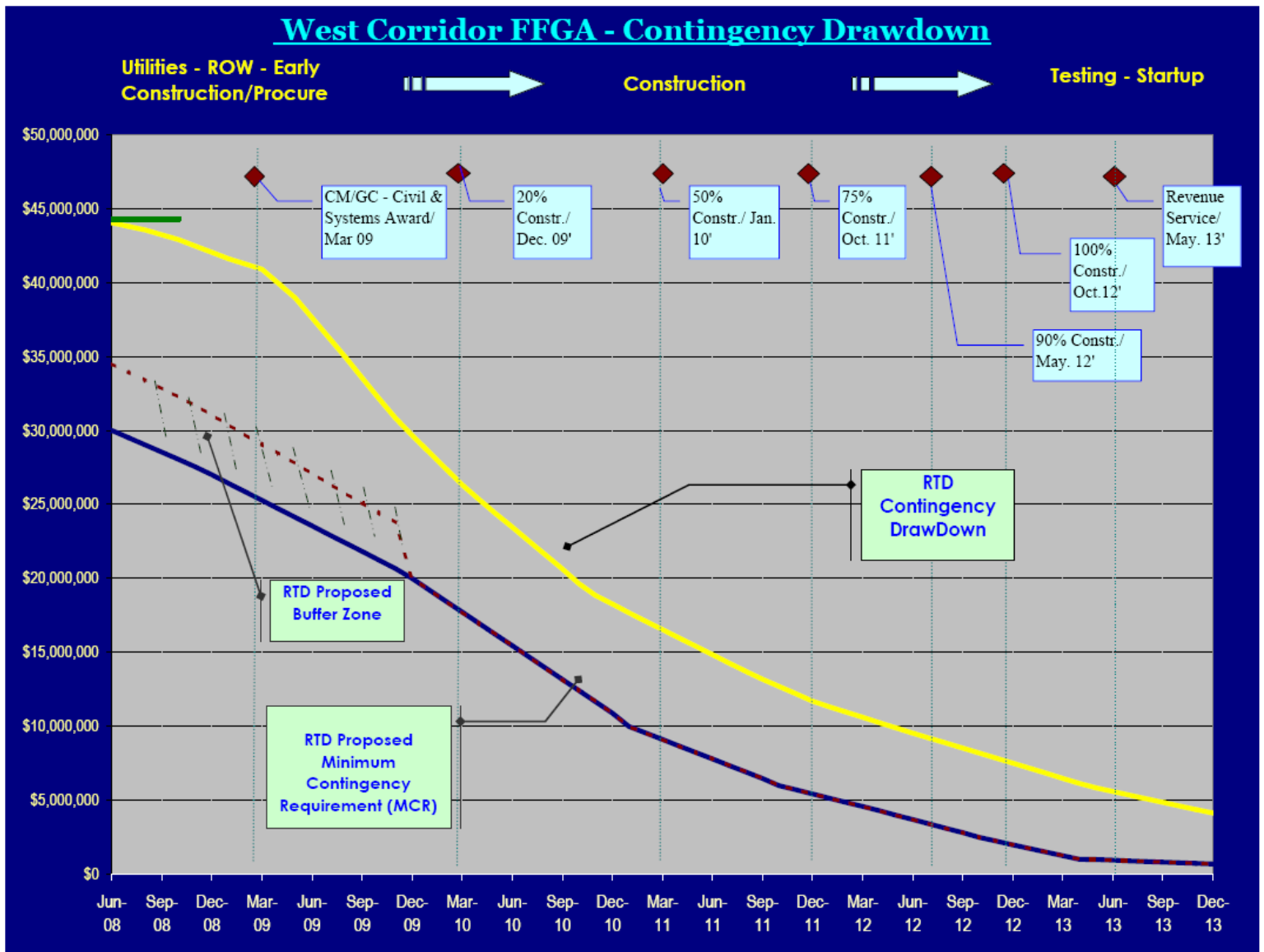
Risks with Potential for Improvement:

The risk for Escalation and Copper Procurement are noteworthy risk reduction mitigations that will benefit the bottom line cost for the West Corridor and reduce the required contingency. The Handshake agreement costs for materials, labor and fuel were calculated at a higher rate than the current market, thus we expect a reduction in the final GMP. Also included in the budget was 21M in potential escalation costs above the handshake agreement. Based on the market trends this figure will be reduced as well. Additionally, DTCG is considering including all risks for escalation, thus removing escalation as a risk entirely and removing the required contingency as well. Copper market prices have lowered significantly since the budget was established, and RTD is forecasting a savings in excess of 1M for copper procurement budget.

RISK MANAGEMENT Contingency Drawdown

In collaboration with the FTA and PMOC , RTD is designing a Risk Management Program which includes the Risk Management Plan (RMP) and Contingency Management Plan (CMP) . Part of this management includes the Risk Register and the Contingency Drawdown Chart to display the cumulative contingency maximum/ minimum range drawdown, as the project progresses. These tools provide for the close management of risk and adherence to the West Corridor Budget.

The West Corridor is maintaining the allowable contingency at 48% above the minimum contingency.



RISK MANAGEMENT—Risk Register

PROJECT RISK REGISTER		Low (1)	Med (2)	High (3)	Legend	
Denver West Corridor		< 10%	<> 10-50%	> 50%	< 100	
REV : 1		< \$100K	<> \$100K - 500K	> \$500k	100-250	
DATE ISSUED : October 30, 2008		< 2 Mths	<> 2 - 6 Mths	> 6 Mths	> 250	
Risk ID	Risk Event	Probability	Cost \$	Time	Score	Discipline Lead
Project-Wide						
PW-1	Design errors (or omissions) on the part of RTD/DEA/FSRC that result in modifications to the construction contract resulting in change orders (CO) affecting: cost, schedule, or contract terms.	100		3	2	600 ALL DISCIPLINE MANAGERS
PW-7	Escalation: The risk of prices for critical materials exceeding chosen commodities index(es) included in the contracts.	50		2	1	100 JERI T
PW-S	Potential issues surrounding details of interfaces between multiple contractors, sub-contractors, stakeholders, and other entities (such as Aardex).	80		2	1	180 RON S
SCC 10 Guideway and Track						
SCC10-38	Cost of soil improvements to 2,400 linear feet of retaining walls exceeding allowances.	50		1	1	50 PAUL D
SCC10-24	Exposure to cost fluctuations remains since steel and cement still have to be procured for some of the 12 bridges. Until fabrication and construction of all bridges are complete the price of commodities remains a risk. Unable to get firm prices for all br	25		1	1	25 JERI T
SCC10-15	The 100% design may not support the removal of retaining walls and anticipated cost reductions.	30		1	1	30 JACK V
SCC10-28	May need to increase amount of excavation above that allocated in the GMP.	30		2	2	120 PAUL D
SCC 20 Stations, Stops, Terminal						
SCC20-21a	The Jefferson County Government Center parking garage may not be completed in time for opening day if there is a requirement for additional parking. The EIS required 700 spaces; plans are for 549.	80		1	1	80 DENNIS C
SCC 40 Sitework and Special Conditions						
SCC40-23	The 100% design for the sound walls and ballast walls may not achieve expected cost reductions.	90		2	1	180 JACK V
SCC40-19	CM/GC allowance for demolition and site remediation may not be sufficient.	80		3	1	240 PAUL D
SCC40-20	Utility relocations may not be completed without impacting WC schedule. Possible unknown utilities or unanticipated costs.	20		2	1	40 VIVIAN S
SCC40-25	Hazmat for the BYL	80		2	1	180 JOE C
SCC40-24	PUC Application and response. Potential denial of RTD request for no horns or bells at intersections in lakewood	50		2	2	200 BRENDA T
SCC40-21	Hazmat and contaminated soil removal may be more significant than expected. Significant risk of unanticipated hazmat sites during construction.	50		2	2	200 MATT H

PROJECT RISK REGISTER		Low (1)	Med (2)	High (3)	Legend	
Denver West Corridor		< 10%	<> 10-50%	> 50%	> 100	
REV : 1		< \$100K	<> \$100K - 500K	> \$500k	100-250	
DATE ISSUED : October 30, 2008		< 2 Mths	<> 2 - 6 Mths	> 6 Mths	> 250	
Risk ID	Risk Event	Probability	Cost \$	Time	Score	Discipline Lead
SCC 50 Systems						
SCC50-22	There is a possibility the fire department requirements for blue light or SCADA will be added back into scope	100		3	1	300 KEN M
SCC50-11	There are significant and varied interfaces with existing corridors. These interfaces (and cut-overs) pose significant schedule risks.	50		2	1	100 KEN M
SCC 60 ROW						
SCC60-6	Delay in acquisition of fourplex and completion of relocation for the tenants for Sheridan Bridge construction)	100		3	3	900 PHIL L
SCC60-8	Final ROW settlement costs exceed budget estimates.	90		3	1	270 DENNIS
SCC60-9	Concern that railroads aren't doing preparatory work since they are awaiting the 100% design drawings for the Burnham Yard Lead. That makes a potential schedule and possible cost impact (since the cost is RTD's figure).	50		1	2	100 JOE C
SCC60-5	Delay in possession of parcels not yet certified and required in Jan09 – April09 time frame	90		1	1	90 PHIL L
SCC 80 Professional Services						
SCC80-6	Possible need for additional coverages on ROCIP (including DBE coverage) for bid and performance bonds).	100		2	1	200 RON S
SCC80-3	Staffing requirements and overhead costs may rise if schedule slips. (RTD Staff)	60		2	1	120 JERI T
SCC80-8	Possible conflicts of areas of responsibility for testing, delays in test completion, or other integration could lead to delays and additional staffing costs.	50		2	1	100 KEN M
Terms and Conditions						
T&C-6	Costs exceed budgeted allowance accounts	50		3	1	150 JERI T
T&C-18	Change orders may arise due to unclear areas between CM/GC and Systems areas of responsibilities.	50		1	1	50 KEN/PAUL
T&C-26	RTD may decide not to deliver the Federal Center garage through the Aardex contract.	100		0	0	0 BILL S
T&C-27	Stormwater/drainage issues impacting the Parking Facility at Cold Springs	100		1	1	100 PAUL V
T&C-8	Remaining dry utilities and CM/GC's wet utilities may cause schedule delays.	20		2	2	80 VIVIAN S

NEW RISK
CLOSED OUT RISK

DBE Participation

Firm	DBE Goal	Actual for October 2008
David Evans & Associates	21%	17%
FRSC	10%	14.02%
Denver Transit Construction Group (DTCG)	13% Pre-Construction	15.0%

PROJECT BUDGET SUMMARY Subcontractor Contracts

Contract #	Contractor	Scope/Services	Approved Amount	Award Date
672122SR	A.J. Ventures, Inc.	Potholing	\$2,400	Sep-06
15DO031	AECOM Consultants Inc.	Traffic Modeling	\$85,031	Jan-06
15DO047	Associated Value Consultants	Property Appraisal	\$66,600	Jul-06
18DR007	Balfour Beatty	System Construction	\$5,500,000	Jul-08
15DO041	Bonnie Roerig & Associates	Property Appraisal	\$66,600	Jul-06
13FR019	Booz, Allen & Hamilton	Vehicle Inspection	\$643,434	Nov-03
17DH001	Briggs Field Services, Inc.	Property Acquisition	\$400,000	Sep-07
672047CR	Burlington Northern and Santa Fe	Flagging	\$3,000	Apr-05
15DH001	Carter::Burgess	Program Management	\$4,516,896	Jul-05
PO5083	CDOT	Utilities - Kevin Custy	\$29,200	Jun-07
PR133636	City of Lakewood-Fed Ctr Street IGA	Bikepath design & construction	\$1,400,000	Mar-08
15DO044	Civil Technology	Property Appraisal	\$66,600	Jul-06
PO9901	Comcast WO #64	Utility Relocation	\$11,243	Dec-07
57DH017	Consolidated Mutual Water	Utility Relocation	\$192,425	Jan-08
15DH007	David Evans and Associates	Final Design	\$25,890,242	Nov-05
56DU001	Denver City & County	FasTracks Liaison	\$123,693	Oct-05
16FFW01	Denver Transit Const. Group	Construction Services	\$22,576,694	Jun-06
17FO034A	Duncan, Ostrander & Dingess, P.C.	Legal Services	\$900,000	Jan-08
15DH006	Front Range Sys.Consultant	System Consultant	\$9,347,844	Oct-05
23FR015	GE Transportation	Automatic Train Stops	\$844,044	Jul-03
PO16312	Graceland Properties	Property Appraisal	\$50,000	Apr-08
47DH008	GSA - Federal Center Station	ROW Acquisition	\$5,363,836	Sep-07
17DH013	H.C. Peck & Associates	Property Acquisition	\$6,599,324	Sep-07
15DO043	Hegarty & Green Inc.	Property Appraisal	\$66,600	Jul-06
17FO034B	Icenogle, Norton, Smith, Bllieszner, & Gilida	Legal Services	\$700,000	Jan-08
15DO046	Joel C. Griffen	Property Appraisal	\$66,600	Jul-06
15DO028	Kaplan Kirsh Rocksell, LLP	Legal Services	\$100,000	Aug-05
18FR001	Kumar & Associates	Testing	\$50,000	Aug-08
15DO007	LT Environmental Inc.	Environmental Service	\$67,704	Sep-05
16FO029	Marsh USA Inc.	Risk Assessment	\$927,386	Aug-07
16DR003	Mass Electric Construction Co.	Elati Yard Improvements	\$214,385	Jun-06
17FO034C	May & Associates, P.C.	Legal Services	\$900,000	Jan-07
27FH024	Progressive Rail Services Corp.	Running Rail	\$4,357,000	Jan-08
TBD	Public Service	Utility Relocation	\$443,384	Jan-08
35FR015	Queen City Railroad Construction	Elati Yard Improvements	\$1,823,164	Apr-06
57DH020	Qwest Communications	Utility Relocation	\$59,389	Sep-07
27FH025	Rocla Concrete Ties Inc.	Concrete Ties	\$3,170,000	Jan-08
15DO045	Rothweiler Group Inc	Property Appraisal	\$66,600	Jul-06
12FR201	Siemens Transportations Systems	Light Rail Vehicles	\$71,150,090	Dec-04
17DH014	Universal Field Services, Inc.	Property Acquisition	\$800,000	Sep-07
572031CR	Urban Engineers Inc.	Risk Assessment	\$49,547	Mar-05
57DH016	Xcel Energy	Utility Relocation	\$182,796	Oct-07

Contracts Total

\$169,873,751

PROJECT BUDGET SUMMARY

Corridor Element	(YOES)		Approved Budget (BUD)	*Appropriated / **Committed	Obligated/ **Committed to Date	% Committed	Actual to Date	Estimate at Completion (EAC)	Budget Variance BUD-EAC
	Baseline Budget	Allocated Contingency Changes							
Thru 12/31/08 Thru 10/31/08									
10 Guideway & Track Elements	\$157,703,164	\$4,667,000	\$157,703,164	\$8,698,705	\$152,717,175	97%	\$3,056,862	\$157,703,164	\$0
20 Stations, Stops, Terminals	\$57,959,040	\$4,261,000	\$57,959,040		\$47,563,055	82%	\$0	\$57,959,040	\$0
30 Support Facilities: Yards, Shops, Admin Bldgs	\$2,000,000	\$0	\$2,000,000	\$5,253,854	\$1,910,955	96%	\$1,916,560	\$2,000,000	\$0
40 Sitework & Special Conditions	\$128,414,264	\$9,385,000	\$128,414,264	\$6,150,358	\$120,082,247	94%	\$1,964,837	\$128,414,264	\$0
50 Systems	\$78,563,616	\$0	\$78,563,616	\$4,141,025	\$9,641,024	12%	\$0	\$78,563,616	\$0
60 ROW, Land, Existing Improvements	\$54,851,476	\$4,570,000	\$54,851,476	\$20,911,569	\$17,557,021	32%	\$15,883,754	\$54,851,476	\$0
70 Vehicles	\$71,150,090	\$0	\$71,150,090	\$71,150,090	\$71,150,090	100%	\$69,628,725	\$71,150,090	\$0
80 Professional Services	\$85,890,126	\$3,401,000	\$85,890,126	\$38,788,891	\$45,084,830	52%	\$42,811,883	\$85,890,126	\$0
90 Unallocated Contingency	\$16,478,416	\$0	\$16,478,416	\$50,210,562	\$0	0%	\$0	\$16,478,416	\$0
Capital Total	\$653,010,191	\$26,284,000	\$653,010,191	\$205,305,053	\$465,706,397	71%	\$135,262,620	\$653,010,191	\$0
100 Finance Charges	\$56,819,000	\$0	\$56,819,000	\$0	\$0	0%	\$0	\$56,819,000	\$0
TOTAL PROJECT COST (10-100)	\$709,829,191	\$26,284,000	\$709,829,191	\$205,305,053	\$465,706,397	71%	\$135,262,620	\$709,829,191	\$0

Notes:

The above figures do not include finance charges.

The actual cost for EIS/PE is not included in the actual cost to date.

*Appropriations are updated on an annual basis

**Committed to Date includes Federal portion of May 22nd Agreement with CM/GC

PROJECT SCHEDULE SUMMARY

Attached is the West Corridor Summary Project Schedule through October 31, 2008. Schedule highlights are as follows:

- Civil Design is 99% complete
- System Design is 99% complete
- LONP Construction Early Work is 60% complete
- Full Construction NTP is scheduled for April 2009

Civil and System Issue for Construction drawings will be distributed in January 2009, after all stakeholder comments have been addressed.

Burnham Yard Lead Final Design drawings will be submitted in mid November 2008.

Civil/Systems construction coordination milestones will be complete in November 2008.

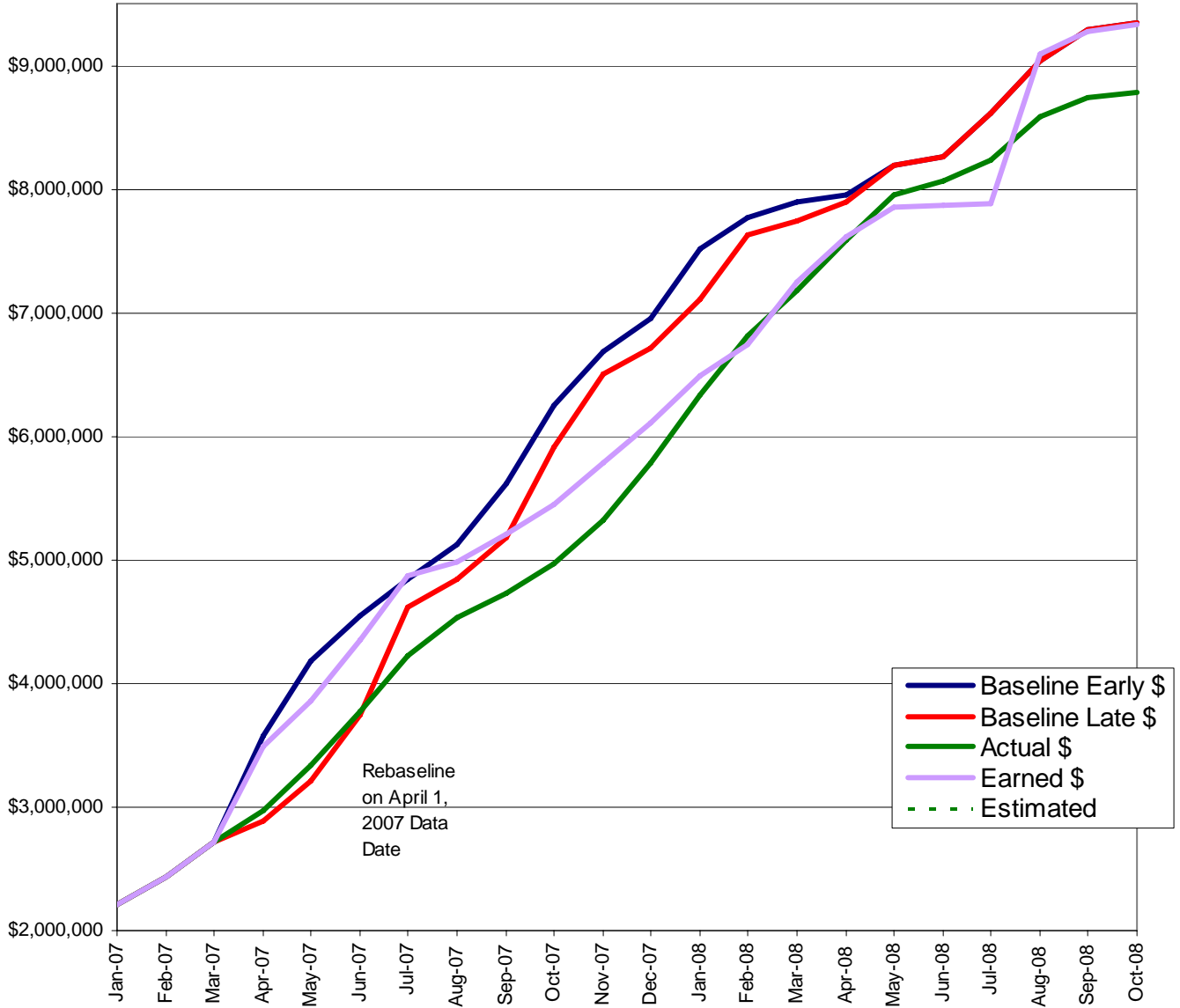
Critical work for next month consists of ROW procurement, FFGA funding, and dry utility work.

LONP Early Construction Work is continuing. Kipling Bridge is complete. Dry Creek West and Dry Creek East Bridges are ongoing and forecast to complete by March 2009. Tennyson, Wolff, and Hazel Pedestrian Bridges are on in progress and forecast to complete by March 2009. Steel Procurement for bridges is ongoing, as well as the dry and wet utility relocations.

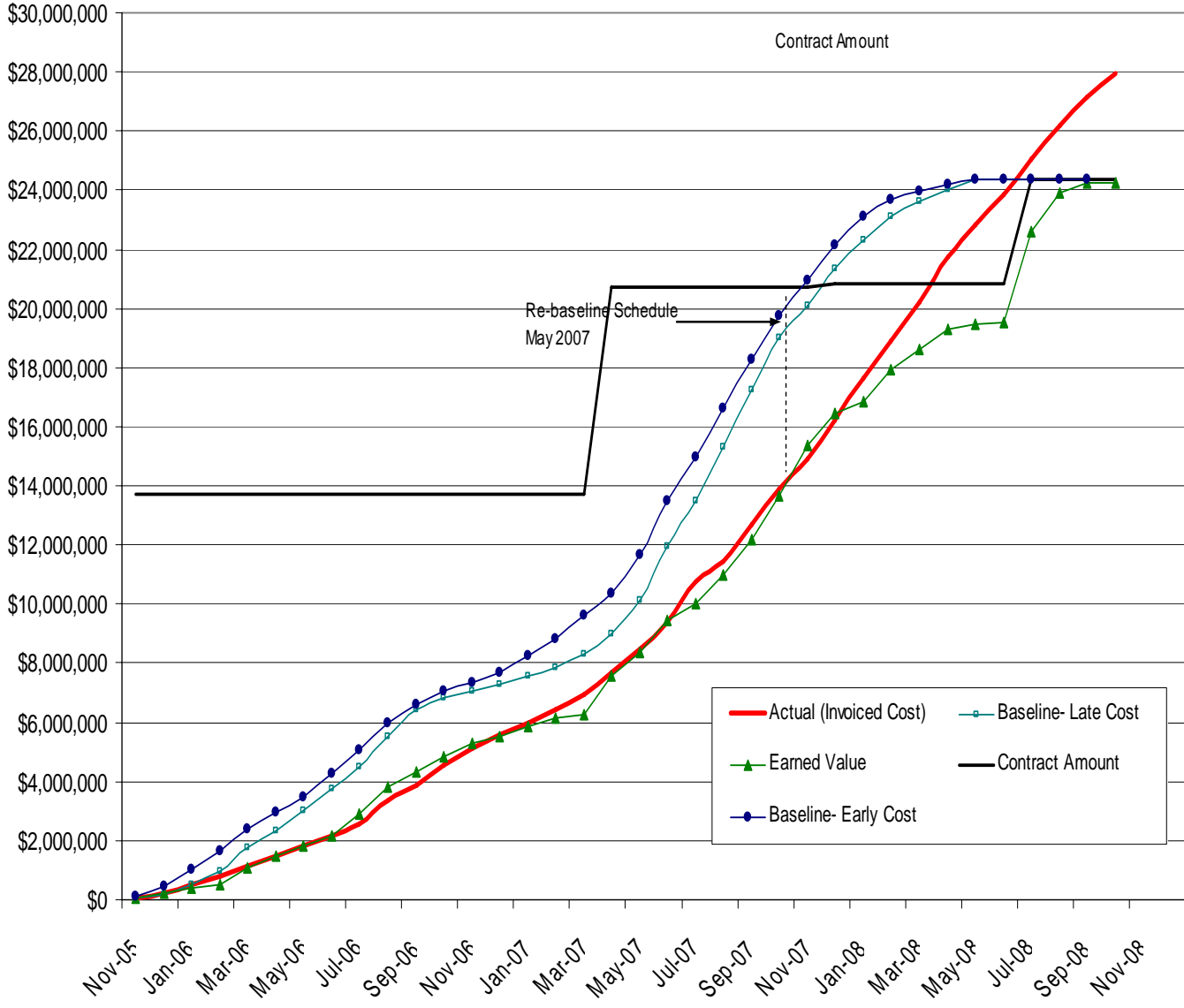
Critical to the construction schedule is the availability of the CCD Maintenance Facility location to start the Federal/Decatur construction work.

▪

West Corridor - System Design
Overall Progress Curve



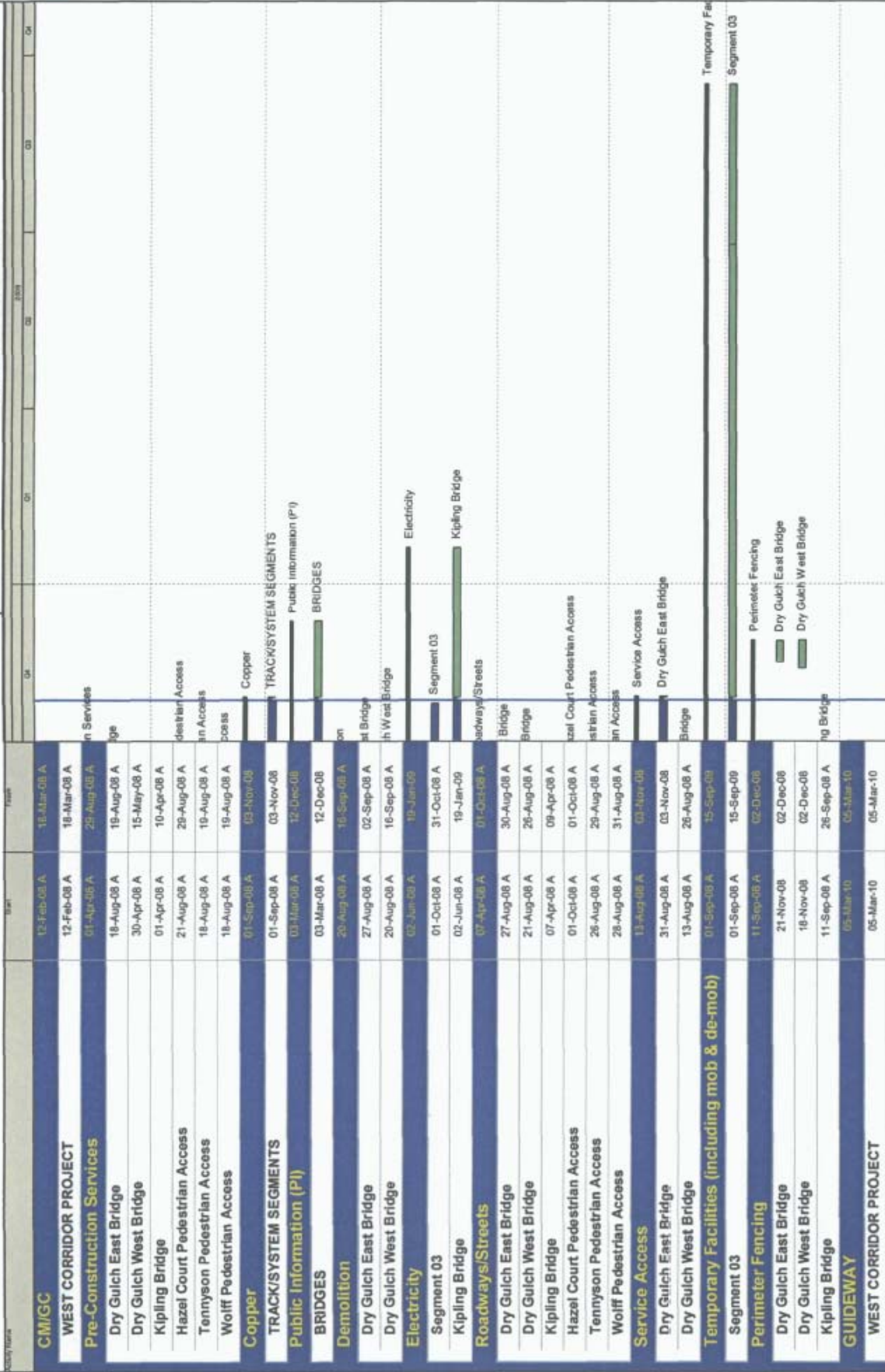
West Corridor Final Design Cost Curve



Internal FasTracks Schedule - WEST CORRIDOR - Near Term

Activity	Start	End	Jan	Feb	Mar	Apr	May	Jun	Jul	Aug	Sep	Oct
CONTRACTS	17-Feb-09	02-Apr-09										
CM/GC	17-Feb-09	02-Apr-09										
RTD Board Approval of CM/GC Construction Contract Mod NTP for Construction Tied to FFCA Submittal*	17-Feb-09	02-Apr-09										
CM/GC NTP tied to FFCA Submittal*	17-Feb-09	02-Apr-09										
FEDERAL APPLICATIONS	16-Sep-08 A	14-Jan-09										
Full Funding Grant Agreement (FFGA)	16-Sep-08 A	14-Jan-09										
OST/OMB Review	16-Sep-08 A	13-Nov-08										
Congressional Review	14-Jan-09	14-Jan-09										
FFGA Executed	14-Jan-09	14-Jan-09										
FINAL DESIGN	18-Sep-08 A	11-Nov-08										
Burnham Yard Lead 100 % Final Design Drawings	18-Sep-08 A	11-Nov-08										
RIGHT-OF-WAY (ROW)	26-Mar-09	13-Oct-09										
Output Milestone- ROW Ready for Construction - Federal Center Station	26-Mar-09*											
Output Milestone- ROW Ready for Construction - Perry Station	06-Apr-09*											
Output Milestone- ROW Ready for Construction - Federal Station	04-May-09*											
Output Milestone- ROW Ready for Construction - Track Section 05 - W. Sheridan to V	04-May-09*											
Output Milestone- ROW Ready for Construction - Knox Ct Bridge	04-May-09*											
Output Milestone- ROW Ready for Construction - I-70 Tunnel	04-May-09*											
Output Milestone- ROW Ready for Construction - Indiana Bridge	04-May-09*											
Output Milestone- ROW Ready for Construction - Jeffco Station	04-May-09*											
Output Milestone- ROW Ready for Construction - Red Rocks Station	06-May-09*											
Output Milestone- ROW Ready for Construction - Track Section 01 - Jeffco to E. India	22-May-09*											
Output Milestone- ROW Ready for Construction - Knox Station	01-Jun-09*											
Output Milestone- ROW Ready for Construction - Wadsworth Bridge	11-Jun-09*											
Output Milestone- ROW Ready for Construction - Track Section 02 - Indiana to 6th Ave	18-Jun-09*											
Output Milestone- ROW Ready for Construction - Pikeview Pedestrian	13-Jul-09*											
Output Milestone- ROW Ready for Construction - Oak Station	13-Jul-09*											
Output Milestone- ROW Ready for Construction - Garrison Station	14-Aug-09											
Output Milestone- ROW Ready for Construction - Burnham Yard Lead	17-Aug-09*											
Output Milestone- ROW Ready for Construction - Sheridan Station	31-Aug-09*											
Output Milestone- ROW Ready for Construction - South Platte Bridge	08-Sep-09*											
Output Milestone- ROW Ready for Construction - CML Flyover	25-Sep-09*											
Output Milestone- ROW Ready for Construction - Sheridan Bridge	13-Oct-09*											
Output Milestone- ROW Ready for Construction - Track Section 03 - 6th Ave to W. I	03-Nov-08											
SITENETWORK/SPECIAL CONDITIONS	03-Nov-08	03-Nov-08										
Site Utilities	03-Nov-08	03-Nov-08										
FINISH - KIPLING BRIDGE COMPLETE	31-Aug-08 A	03-Nov-08										
Finishing Conditions	31-Aug-08 A	03-Nov-08										
East Dry Gulch Bridge- Install Access and Channel Crossing - 1540	05-Aug-08 A	07-Nov-08										
GUIDEWAY	06-Aug-08 A	07-Nov-08										
Bridges	06-Aug-08 A	07-Nov-08										
West Dry Gulch Bridge - Mobilization - 1515	03-Nov-08											
East Dry Gulch Bridge- Mobilization	04-Nov-08											
East Dry Gulch Bridge- Rip-Rap Lining- 1540	01-Oct-08 A	03-Nov-08										
Tennysen Ped Bridge-Install Bridge Superstructure -1535	08-Nov-08											
East Dry Gulch Bridge- Install Drop Structure #4 - 1540	14-Oct-08 A	04-Nov-08										
East Dry Gulch Bridge- Bearing Device Type 1 - 1540	03-Nov-08	04-Nov-08										
West Dry Gulch Bridge- Bearing Device Type 1 - 1515	06-Nov-08	07-Nov-08										
CHIEF WORK	11-Aug-08 A	06-Nov-08										
Wolf Bridge - Set Wolf bridge Survey - 1520	11-Aug-08 A	06-Nov-08										
Tennysen Ped Bridge- Set Tennysen Bridge Survey -1535	11-Aug-08 A	06-Nov-08										
West Dry Gulch Bridge- Rip-Rap Lining-Phase 1 - 1515	25-Aug-08 A	03-Nov-08										
West Dry Gulch Bridge- Rip-Rap Lining-Phase 2 - 1515	03-Nov-08	04-Nov-08										
PROJECT MANAGEMENT AND ADMINISTRATION	01-Jan-09 A	28-Nov-08										
External Stakeholder Agreements	01-Jan-09 A	28-Nov-08										
BNSF Review and Approval - CML Flyover	01-Jan-08 A	28-Nov-08										

WC LONP, Early NTP Schedule



 Remaining Level of Effort
  Actual Work
  Critical Remaining Work
 Remaining Work
  Milestone

Activity Name	Start	Finish	GA	GB	GC	GD
Bridges						
TRACK/SYSTEM SEGMENTS						
Segment 03	01-Mar-08 A	14-Jun-10				
BRIDGES						
Dry Gulch East Bridge	01-Sep-08 A	15-Sep-09				
Dry Gulch West Bridge	03-Nov-08	19-Mar-09				
Kipling Bridge	01-Mar-08 A	14-Jan-10				
Hazel Court Pedestrian Access	05-Aug-08 A	19-Mar-09				
Tennyson Pedestrian Access	06-Aug-08 A	19-Mar-09				
Wolff Pedestrian Access	04-Mar-08 A	15-Sep-09				
	05-Aug-08 A	19-Mar-09				
	04-Aug-08 A	19-Mar-09				
	04-Aug-08 A	08-Sep-08 A				
Substructure						
Dry Gulch East Bridge	26-Apr-08 A	19-Mar-09				
Dry Gulch West Bridge	27-Aug-08 A	03-Nov-08				
Kipling Bridge	25-Aug-08 A	19-Mar-09				
Hazel Court Pedestrian Access	26-Apr-08 A	19-Aug-08 A				
Tennyson Pedestrian Access	17-Sep-08 A	10-Nov-08				
Wolff Pedestrian Access	05-Sep-08 A	14-Nov-08				
	16-Aug-08 A	12-Sep-08 A				
Superstructure						
CML Bridge	03-Mar-08 A	03-Mar-10				
S. Platte Bridge	03-Nov-08	15-Oct-09				
Dry Gulch East Bridge	03-Nov-08	05-Mar-10				
Dry Gulch West Bridge	01-Oct-08 A	19-Mar-09				
Wadsworth Bridge	03-Nov-08	15-Oct-09				
Kipling Bridge	19-Jun-08 A	29-Sep-08 A				
6th Avenue Bridge	03-Mar-08 A	11-Jun-09				
Indiana Bridge	03-Nov-08	28-Jan-10				
Hazel Court Pedestrian Access	31-Oct-08 A	05-Dec-08				
Tennyson Pedestrian Access	08-Oct-08 A	04-Dec-08				
Wolff Pedestrian Access	15-Oct-08 A	02-Dec-08				
Civil/Sitework						
Segment 02	03-Mar-08 A	15-Sep-09				
Segment 03	01-Sep-08 A	15-Sep-09				
Segment 05	01-Sep-08 A	15-Sep-09				
BRIDGES						
Dry Gulch East Bridge	03-Mar-08 A	03-Mar-09				
Dry Gulch West Bridge	12-Aug-08 A	25-Nov-08				
Kipling Bridge	12-Aug-08 A	13-Jan-09				
Hazel Court Pedestrian Access	01-Apr-08 A	27-Aug-08 A				
Tennyson Pedestrian Access	03-Sep-08 A	11-Nov-08				
Wolff Pedestrian Access	11-Aug-08 A	06-Nov-08				
Earth Embankment						
Dry Gulch West Bridge	25-Aug-08 A	04-Nov-08				
	25-Aug-08 A	04-Nov-08				

