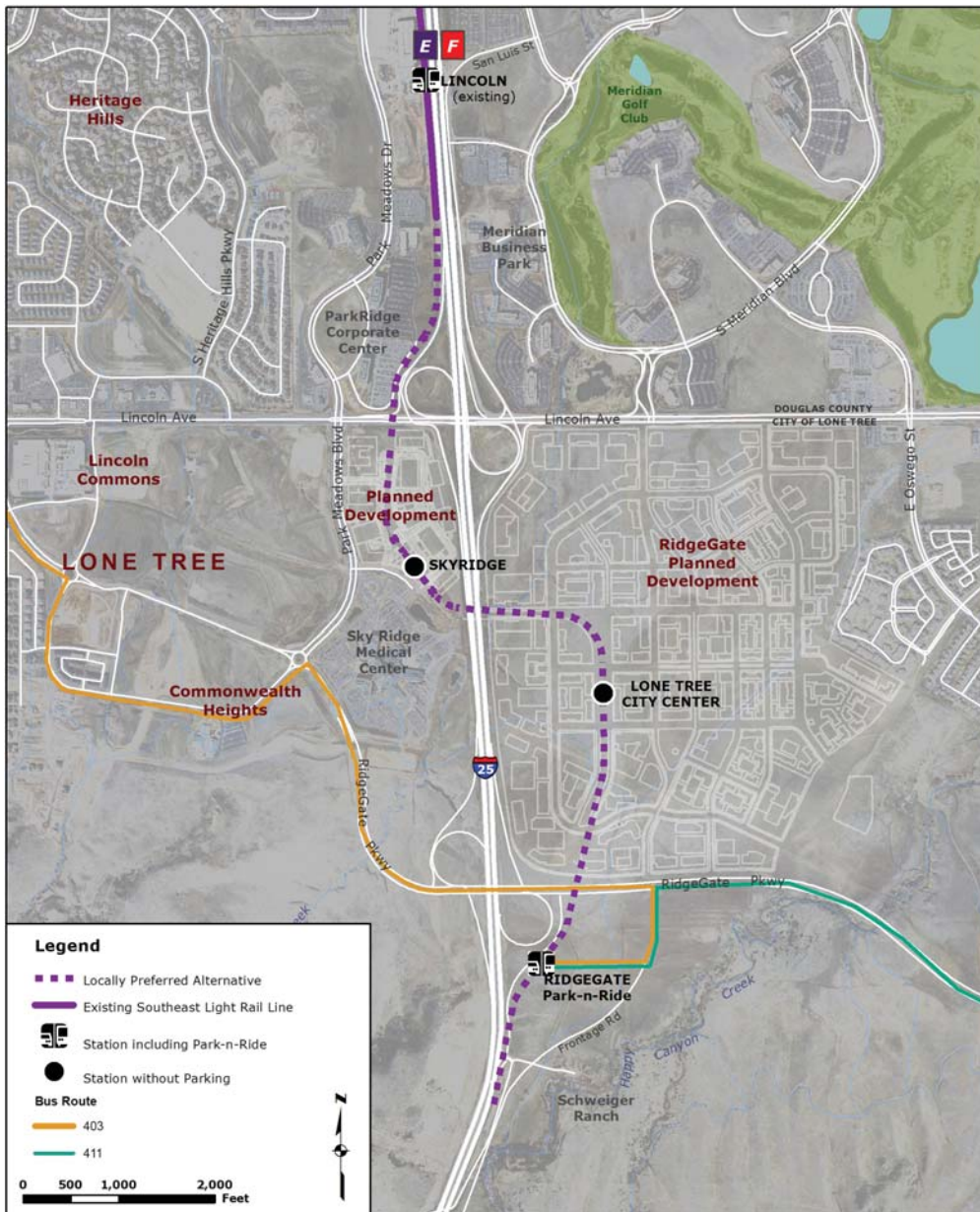


Southeast Extension to RidgeGate Parkway

Locally Preferred Alternative

RTD has conducted an alternatives analysis and has identified a light rail transit (LRT) alignment as the Locally Preferred Alternative (LPA). The LPA includes a 2.3-mile, double-track light rail extension that runs south from the existing Lincoln Station along the west side of I-25, crosses to the east side of I-25 just north of Sky Ridge Hospital, and continues south to the RidgeGate Parkway interchange. The LRT crosses RidgeGate Parkway via an overpass. The LPA provides three

new stations, including two Kiss-n-Rides (stations without parking), one just north of Sky Ridge Avenue across from the Sky Ridge Medical Center, and another, the Lone Tree City Center Station, which is situated in the core of the RidgeGate Planned Development. A new end-of-line station at RidgeGate Parkway would provide 2,000 parking spaces. The LPA includes bus service to the RidgeGate Park-n-Ride.



CONTACT INFORMATION

If you have any questions, please contact:

Susan A. Wood, AICP
Southeast Corridor
Project Manager
RTD 1560 Broadway
Denver, CO 80202

Susan.Wood@rtd-fastracks.com

You can also provide additional comments in the following ways:

Online: www.RTD-FasTracks.com

and click on the
Southeast Rail
Extension Tab

By email: SE@RTD-FasTracks.com

By mail: RTD-FasTracks
Attn: Tina Jaquez
FasTracks Public
Information Team
1560 Broadway, Suite 700
Denver, CO 80202

Phone: 303.299.6902

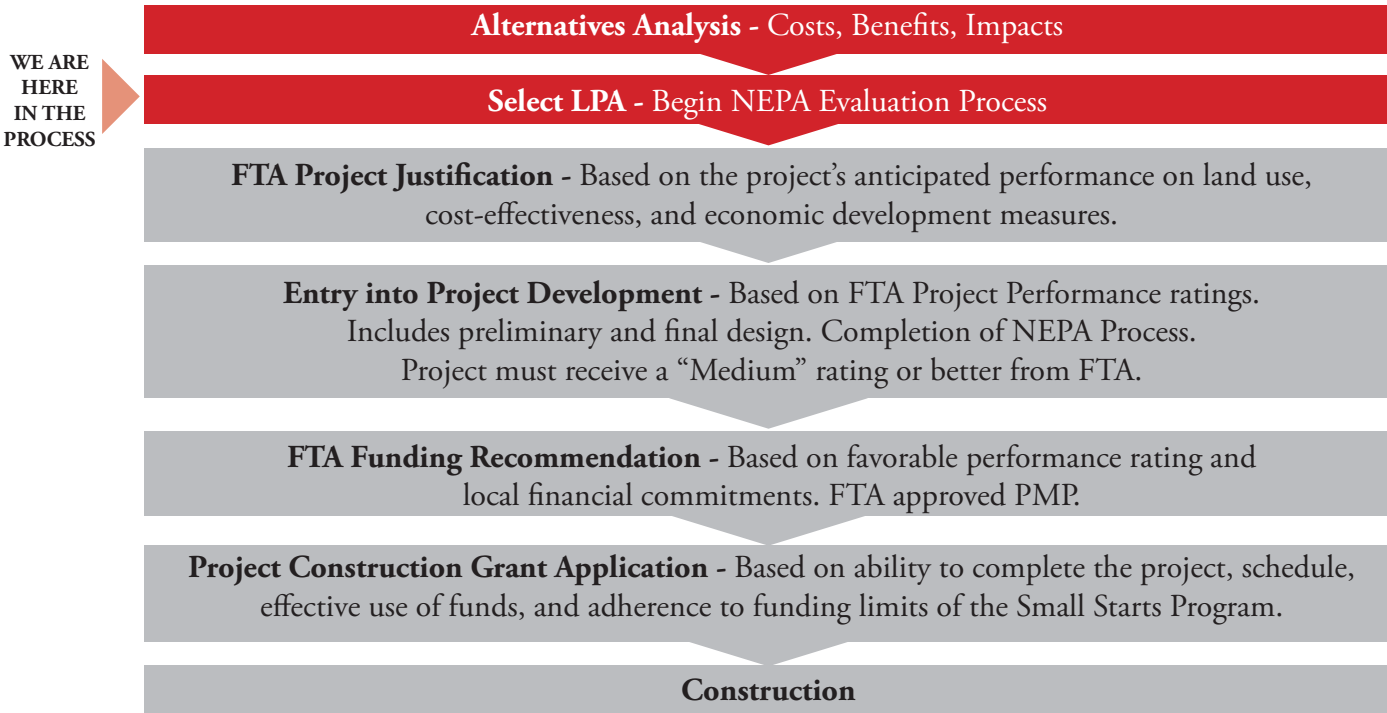
Fax: 303.299.2425

Schedule

	2011			2012											
	OCT	NOV	DEC	JAN	FEB	MAR	APR	MAY	JUN	JUL	AUG	SEP	OCT	NOV	DEC
Alternatives Analysis:															
Develop screening criteria:	●														
Develop preliminary alternatives:	●														
Public and agency scoping:		●													
Conduct alternatives screening:		■													
Public and agency meetings to present Preferred Alternative and identify Locally Preferred Alternative:				●											
Environmental Review Process to be carried out after the AA Process:															
Data collection and existing conditions:				■											
Assess environmental impacts:						■									
Distribute Environmental Assessment:												●			
30-day public comment period for Environmental Assessment:													■		
Public Meeting:													●		
Prepare Decision Document and submit to Federal Transit Administration:														■	
Federal Transit Administration issues the Decision Document:															■

*Schedule subject to change depending on alternatives evaluation process.

Where We Are in the Process



FTA - Federal Transit Administration

LPA - Locally Preferred Alternative

PMP - Project Management Plan