



Northeast Area Transit Evaluation

City of Brighton
City Council

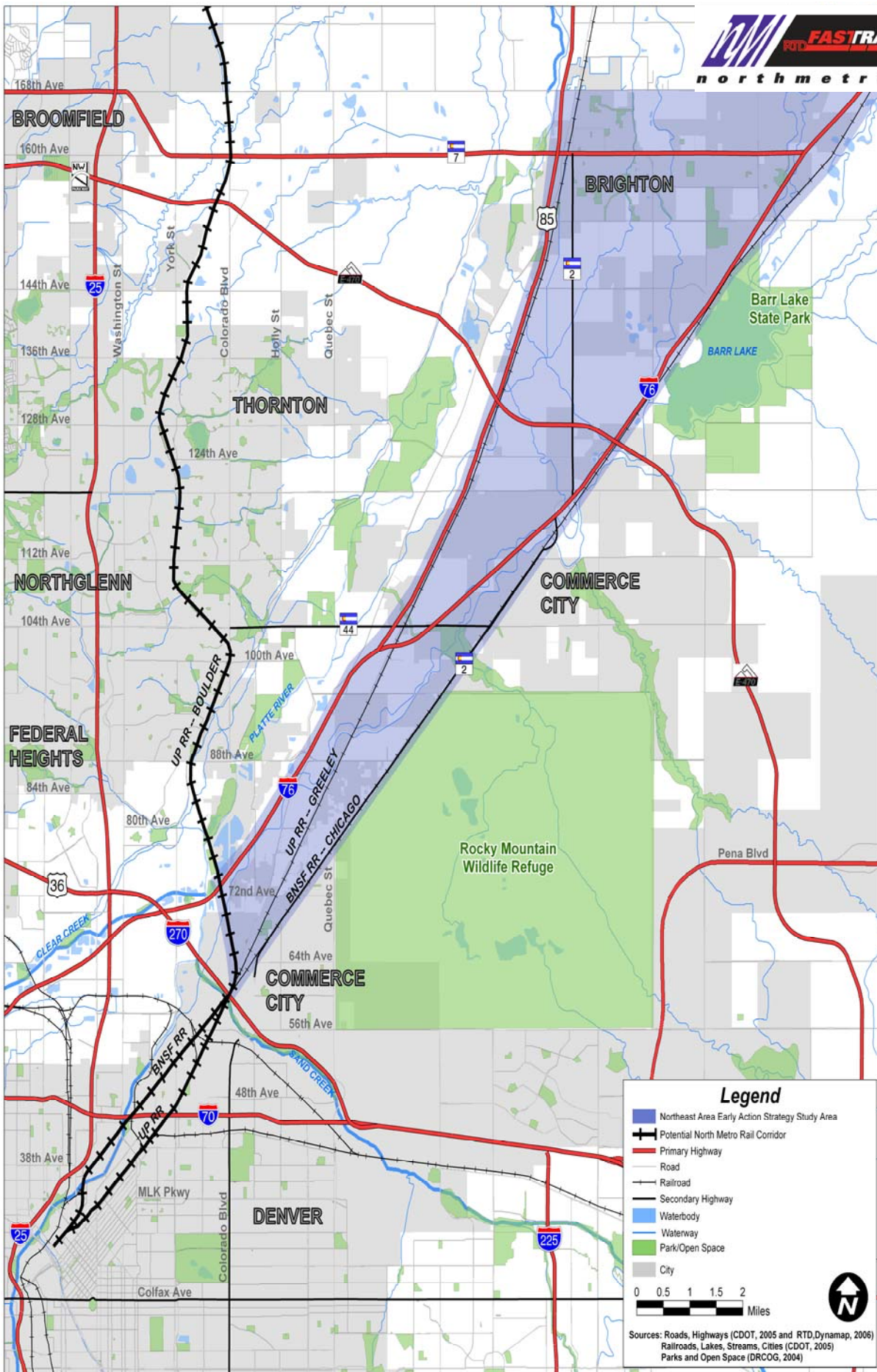
January 2, 2007

Project Purpose & Goal

- **Purpose:** Plan the use of funds (\$7.3 million) designated in the FasTracks program for future fixed-guideway transit within the Northeast corridor between DUS and Brighton.

Project Purpose & Goal

- **Goal:** Work with the affected municipalities/jurisdictions to investigate options to extend future, post-FasTracks, fixed guideway bus and/or rail transit improvements to serve northeastern Commerce City and Brighton with direct connection to the North Metro Corridor or FasTracks system.

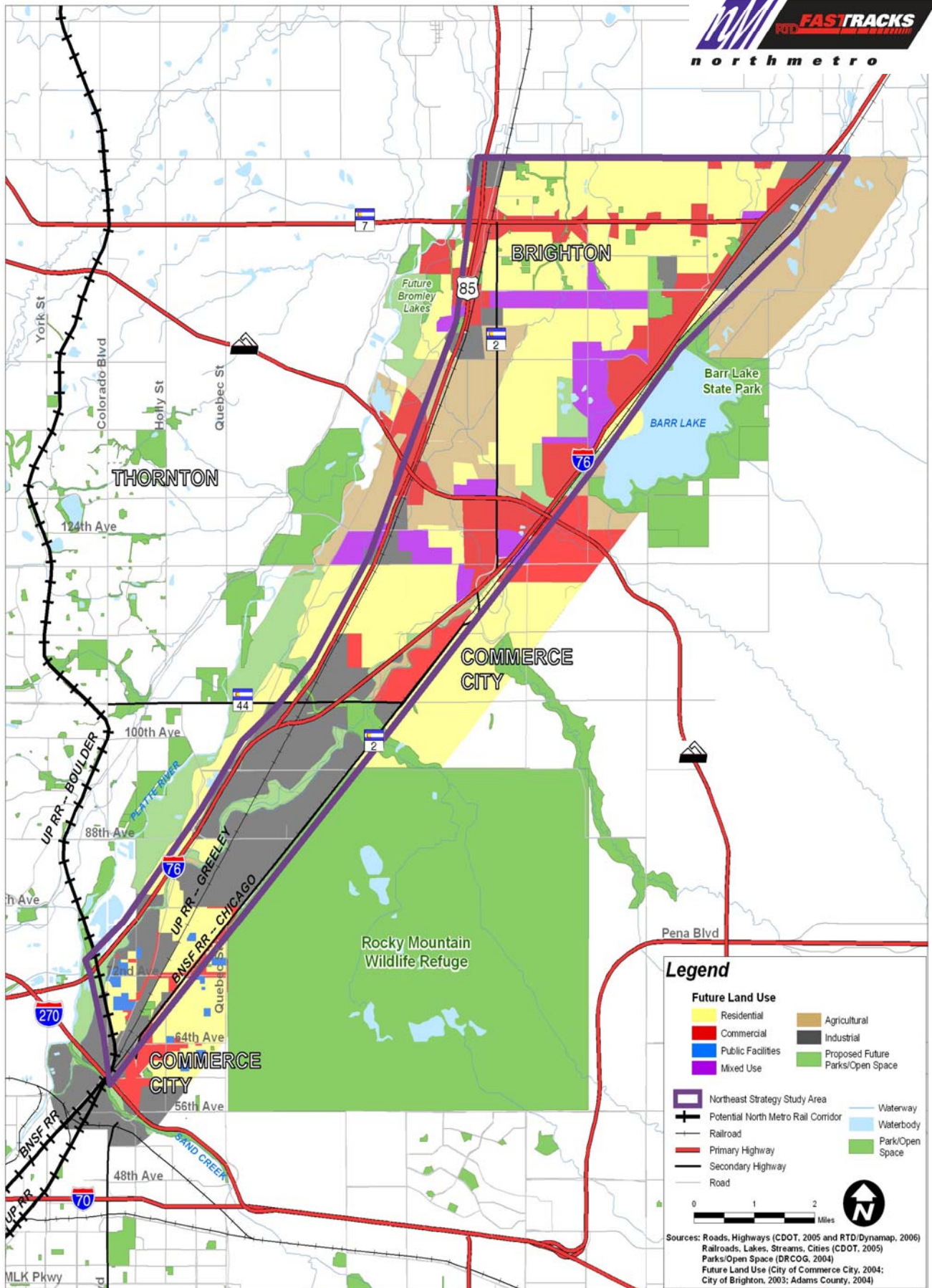


Legend

- Northeast Area Early Action Strategy Study Area
- Potential North Metro Rail Corridor
- Primary Highway
- Road
- Railroad
- Secondary Highway
- Waterbody
- Waterway
- Park/Open Space
- City

0 0.5 1 1.5 2 Miles

Sources: Roads, Highways (CDOT, 2005 and RTD, Dynamap, 2006)
 Railroads, Lakes, Streams, Cities (CDOT, 2005)
 Parks and Open Space (DRCOG, 2004)



Legend

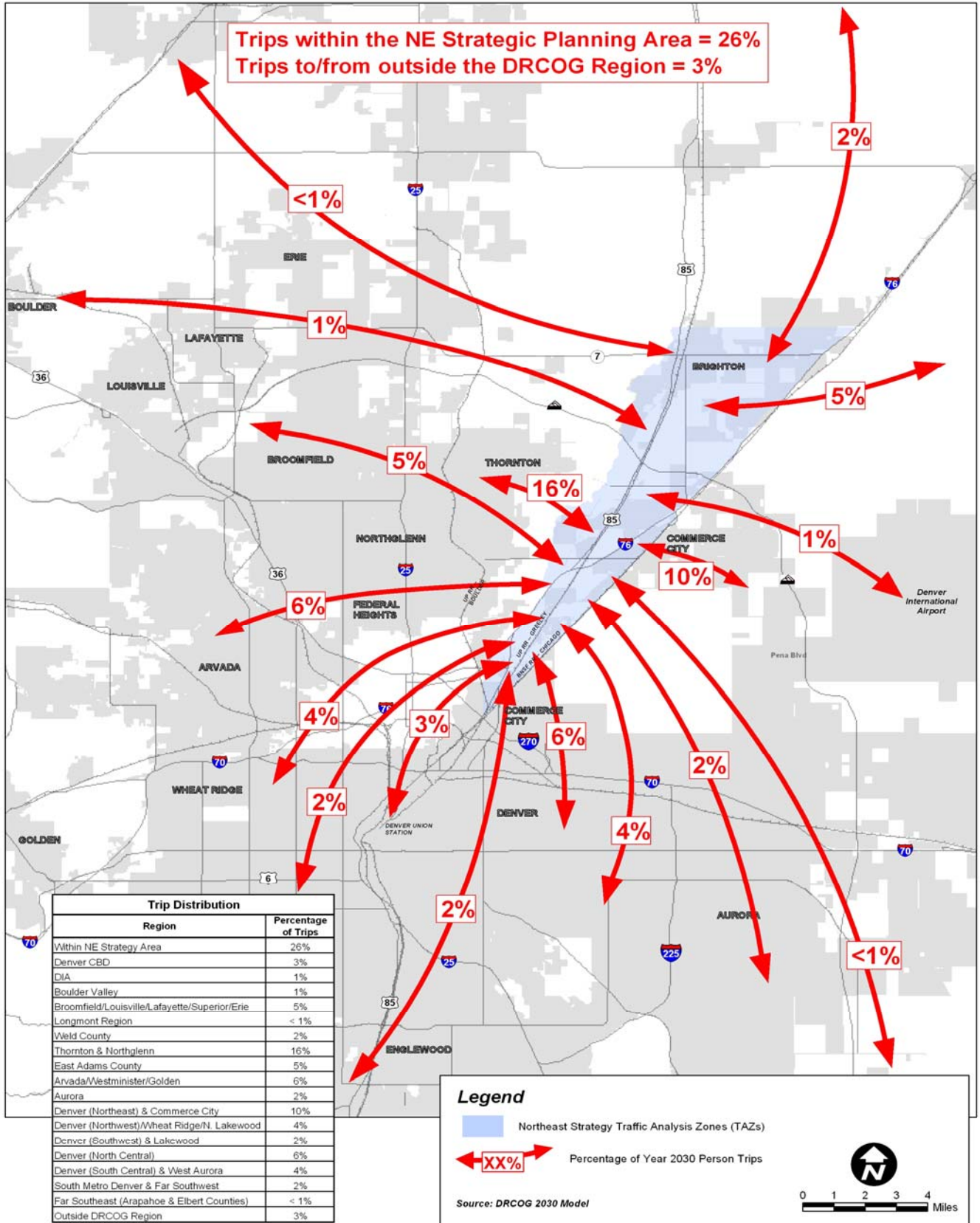
Residential	Agricultural
Commercial	Industrial
Public Facilities	Proposed Future Parks/Open Space
Mixed Use	Park/Open Space

Northeast Strategy Study Area	Waterway
Potential North Metro Rail Corridor	Waterbody
Railroad	Park/Open Space
Primary Highway	
Secondary Highway	
Road	

0 1 2 Miles

Sources: Roads, Highways (CDOT, 2005 and RTD/Dynamap, 2006)
 Railroads, Lakes, Streams, Cities (CDOT, 2005)
 Parks/Open Space (DRCOG, 2004)
 Future Land Use (City of Commerce City, 2004;
 City of Brighton, 2003; Adams County, 2004)

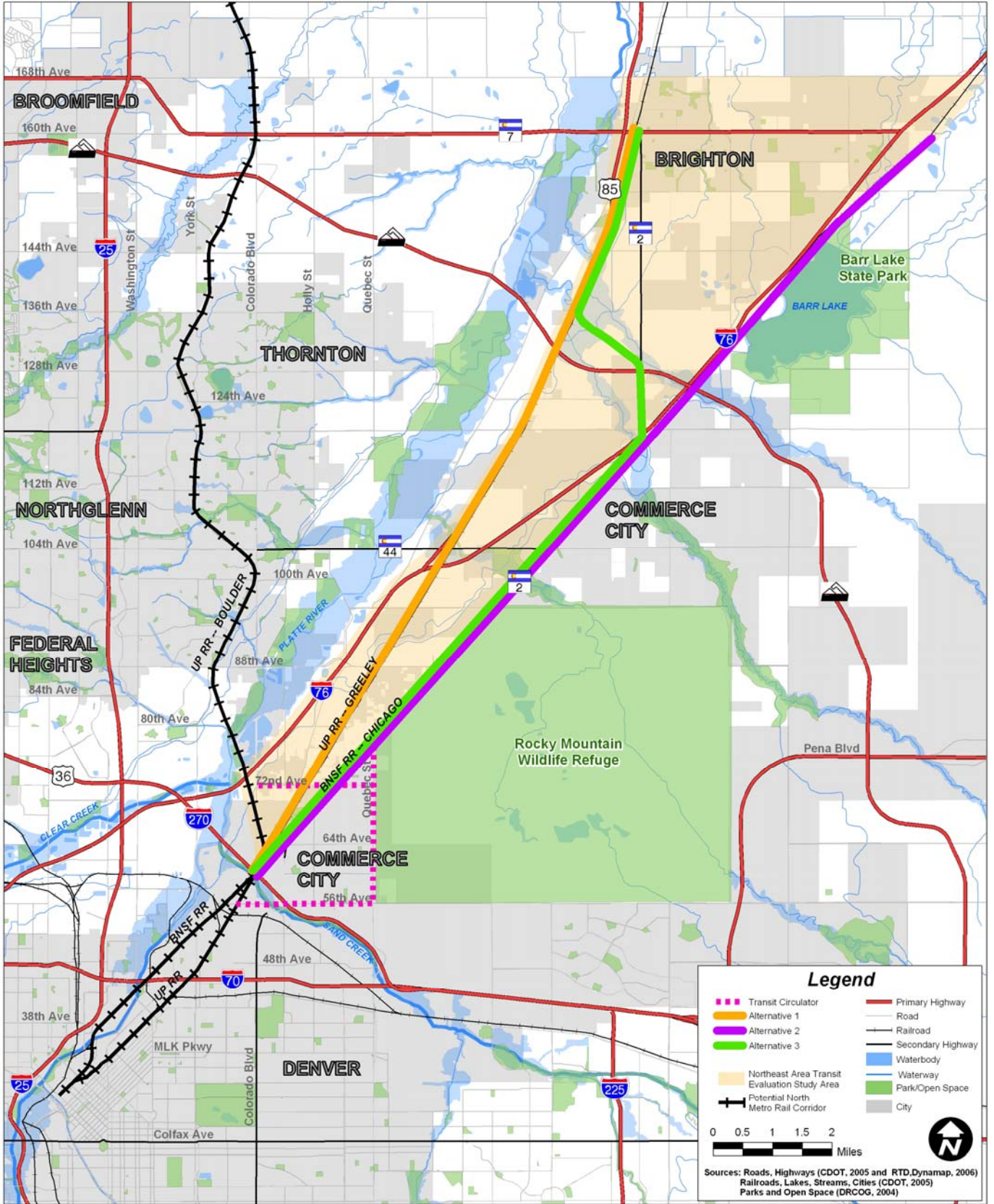
2030 Person Trips To/From the NE Strategic Planning Area



Note: Regions are general and not strictly confined to the areas described.

Alternatives Analysis Evaluation Criteria

- Compatibility with Land Use Plans
- Potential Ridership
- Engineering
Feasibility/Constructability
- Right-of-Way Availability
- Environmental Impact
- Agency/Stakeholder Agreement
- Safety Risk
- Cost
- Connectivity to North
Metro/FasTracks System



Legend

- Transit Circulator
- Alternative 1
- Alternative 2
- Alternative 3
- Northeast Area Transit Evaluation Study Area
- Potential North Metro Rail Corridor
- Primary Highway
- Road
- Railroad
- Secondary Highway
- Waterbody
- Waterway
- Park/Open Space
- City



Sources: Roads, Highways (CDOT, 2005 and RTD, Dynamap, 2006)
 Railroads, Lakes, Streams, Cities (CDOT, 2005)
 Parks and Open Space (DRCOG, 2004)

Alternatives Analysis Summary

Alignment	Preliminary Findings/Ratings
UP Line along US 85 Commuter Rail	Mid-level
BNSF Line along Hwy 2 Commuter Rail	Mid-level
BNSF/E-470/UP Line Commuter Rail	High-level
BNSF Line Light Rail/Commuter Rail	Low-level
BNSF/E-470/UP Line Light Rail/Commuter Rail	Mid-High level

Next Steps

Technical Efforts:

- Develop transit alignment features and a typical cross section;
- Highway features and typical cross section per highway;
- Identify potential park-n-Ride locations;
- Identify key properties
- Integration with local plans

Next Steps (Con't)

Coordination Efforts:

- Two additional Working Committee Meetings (January, February)
- Meet with area developers (late January)
- Present findings and recommendations to City Councils and County Commission (February)