

North Metro Corridor DEIS/BE

Level 3

Station Option Concepts



Thornton Stations

162nd Avenue Station Options



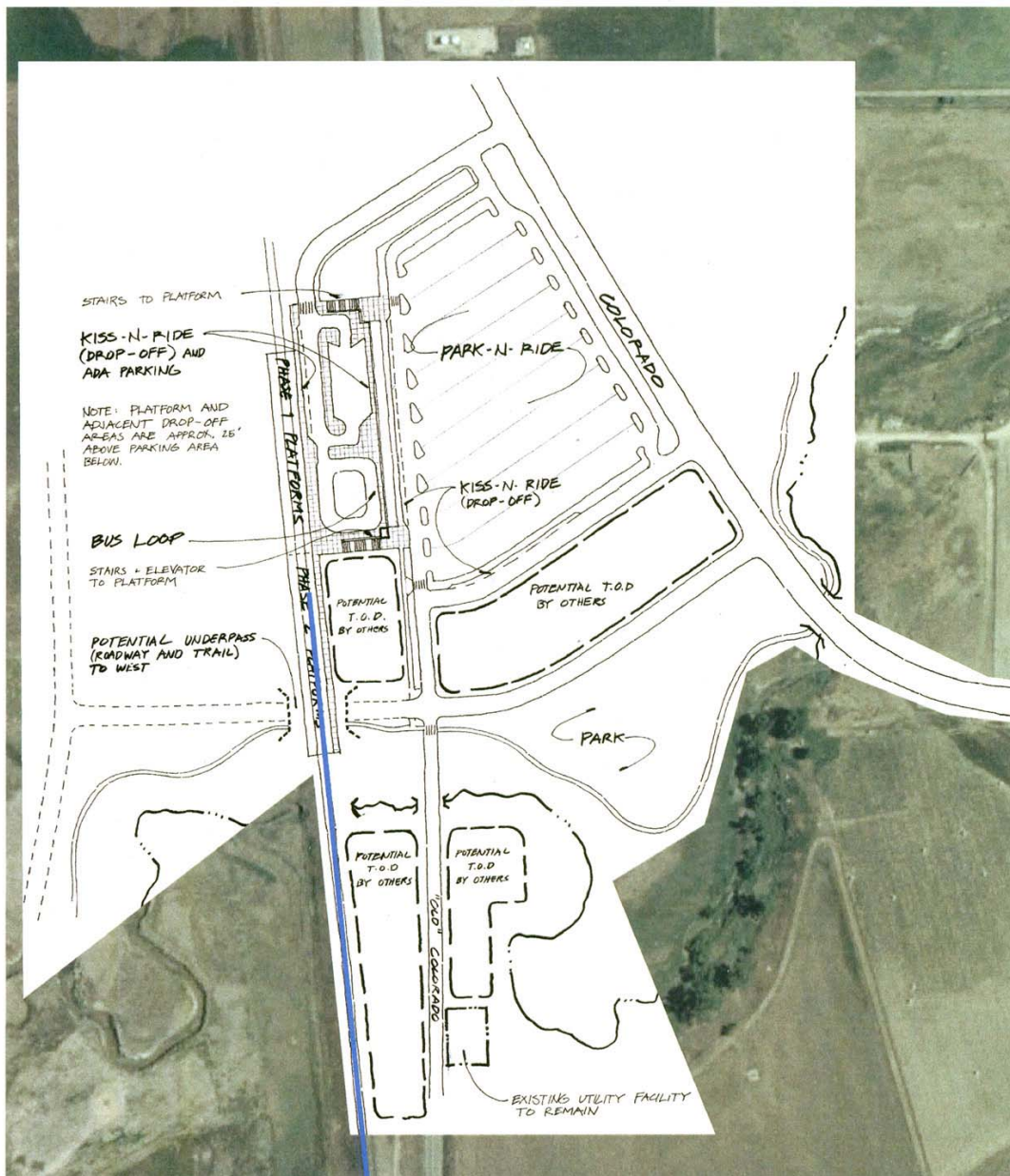
TABLE OF CONTENTS

162 nd Option 1 Concept	2
162 nd Option 2 Concept	3
162 nd Option 3 Concept	4
162 nd Option 4 Concept	5

162nd Option 1 Concept

DESCRIPTON: The North Metro project team created this concept from public and agency input. Parking is east of platform and north of Big Dry Creek.

2015 Parking Demand: High (500-750 spaces). Proposed Parking Lot: Large (600 spaces).



162nd Option 2 Concept

DESCRIPTON: The North Metro project team created this concept from public and agency input. Parking is west of platform and south of Big Dry Creek.

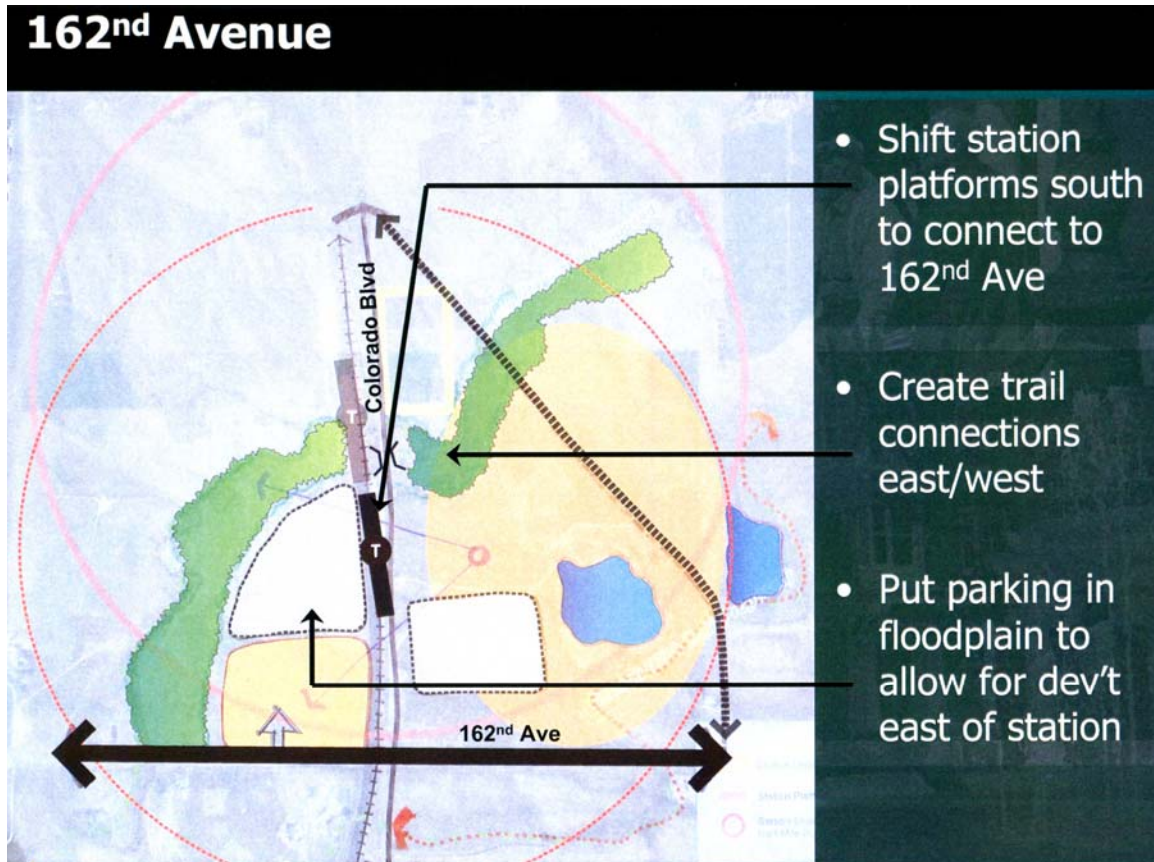
2015 Parking Demand: High (500-750 spaces). Proposed Parking Lot: Large (600 spaces).



162nd Option 3 Concept

DESCRIPTON: The RTD FasTracks TOD team created this concept. Parking is west and east of the platform and south of Big Dry Creek.

2015 Parking Demand: High (500-750 spaces). Proposed Parking Lot: Large (600 spaces).



162nd Option 4 Concept

DESCRIPTON: The City of Thornton created this concept, which also incorporates a plan by the Three Corridor Study 2005. Parking is east of platform and south of Big Dry Creek.

2015 Parking Demand: High (500-750 spaces). Proposed Parking Lot: Large (700 spaces).

