

Commuter Rail Urban Design Templates

METHODOLOGY

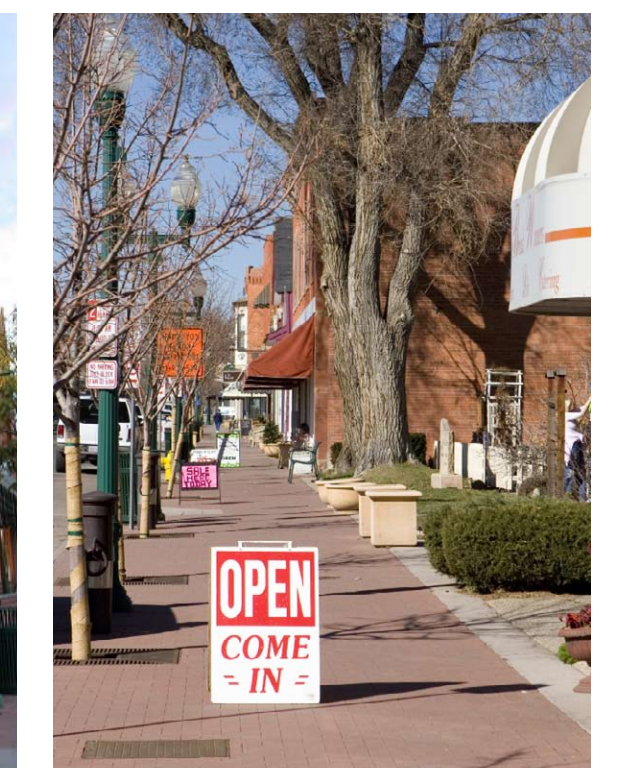
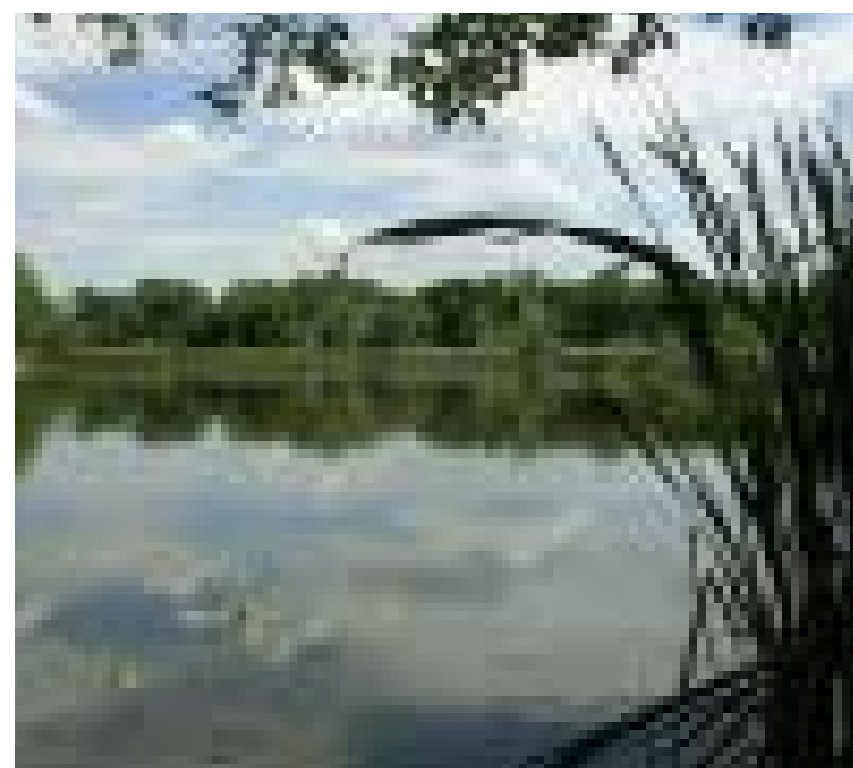
Step 1. Classify Station Elements into Categories

System-wide station elements, corridor-specific elements, and station unique elements.

Step 2. Characterize Each Station Area by Land Use & Character

Establish a recognizable character for each corridor utilizing corridor design influences: unique natural, historical, land use, landmarks and iconic architecture.

Natural Historical Land Use Landmarks & Iconic Architecture	Clear Creek, Ralston Creek, River rock walls Olde Town Arvada, Gold Strike Park, Rural feel, Historic Train Station Mature suburbs, Industrial, Educational Water Tower, Flour Mill, Red Rocks Community College
------------------------------------------------------------------------------------------------------	---------------------------------------------------------------------------------------------------------------------------------------------------------------------------------------------------------------------------



Clear Creek; Van Bibber Horse Trail; Wheat Ridge Greenbelt

Olde Town Arvada

Step 3. Define Commuter Station Typologies

FasTracks commuter rail stations can be loosely classified into four categories based on the anticipated function and level of activity: Neighborhood, Main Street, Town Center and Commuter Park-n-Ride.

Neighborhood Station		
Transit Function	Neighborhood walk-up station. Local bus service, kiss-n-ride drop off, and small-medium park-n-ride.	
Typical Area Character	Residential area (multi-family, townhomes, and single-family) with limited neighborhood commercial uses (local and commuter-serving retail; likely less than 25,000 square feet).	
Main Street Station		
Transit Function	Main street walk-up station. Local and feeder bus service, kiss-n-ride drop off, and park-n-ride.	
Typical Area Character	Sub-regional destination. Ideal location for mixed-use redevelopment with diverse residential options (including residential above retail and multi-family) as well as local employment and commercial (including retail infill).	
Town Center Station		
Transit Function	Capture station for commuters. District circulator, feeder buses, express service, kiss-n-ride, and park-n-ride.	
Typical Area Character	Mixed-use town center development with diverse residential options (including multi-family and townhomes) as well as local and commuter-serving commercial/employment uses (likely more than 50,000 square feet of retail).	
Commuter Station		
Transit Function	Capture station for commuters. Feeder bus service, kiss-n-ride drop off, park-n-ride.	
Typical Area Character	Non-residential commercial or industrial area or edge of a residential neighborhood.	

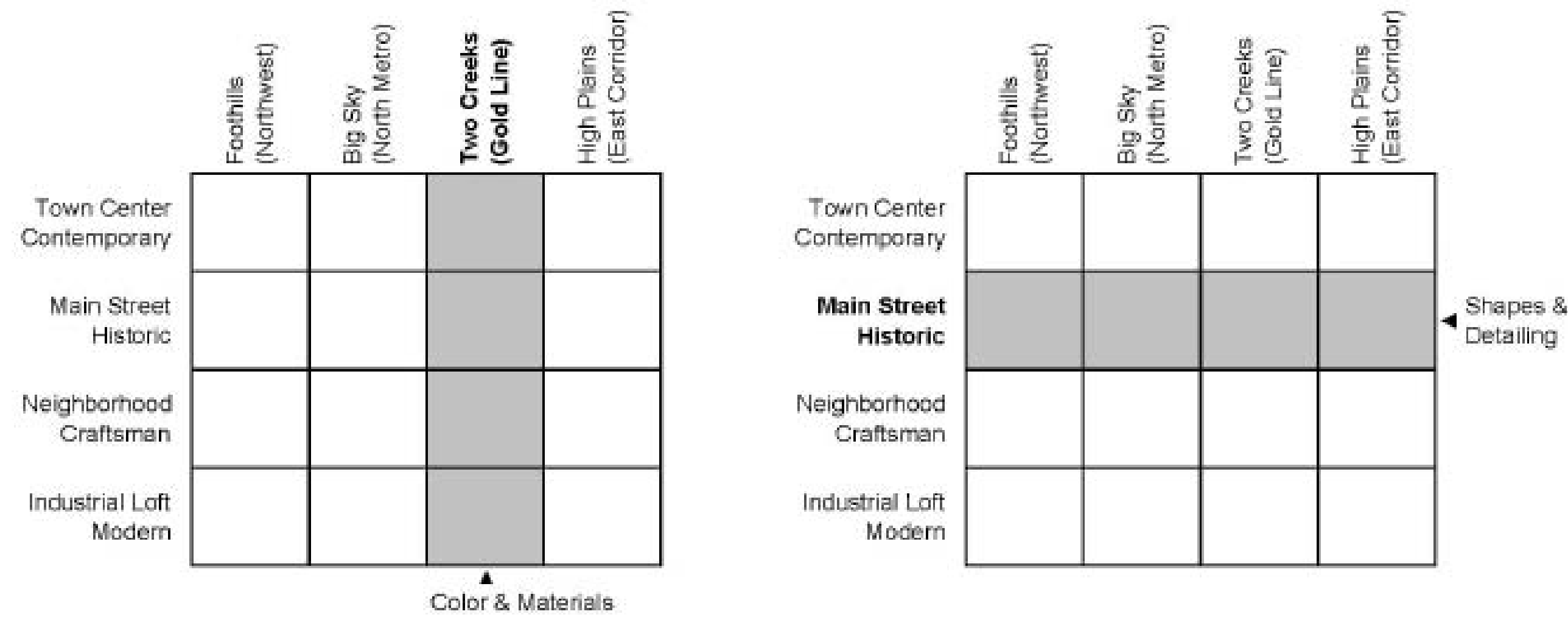
Commuter Rail Urban Design Templates

GOLD LINE (Two Creeks)

Step 4. Define Station Styles

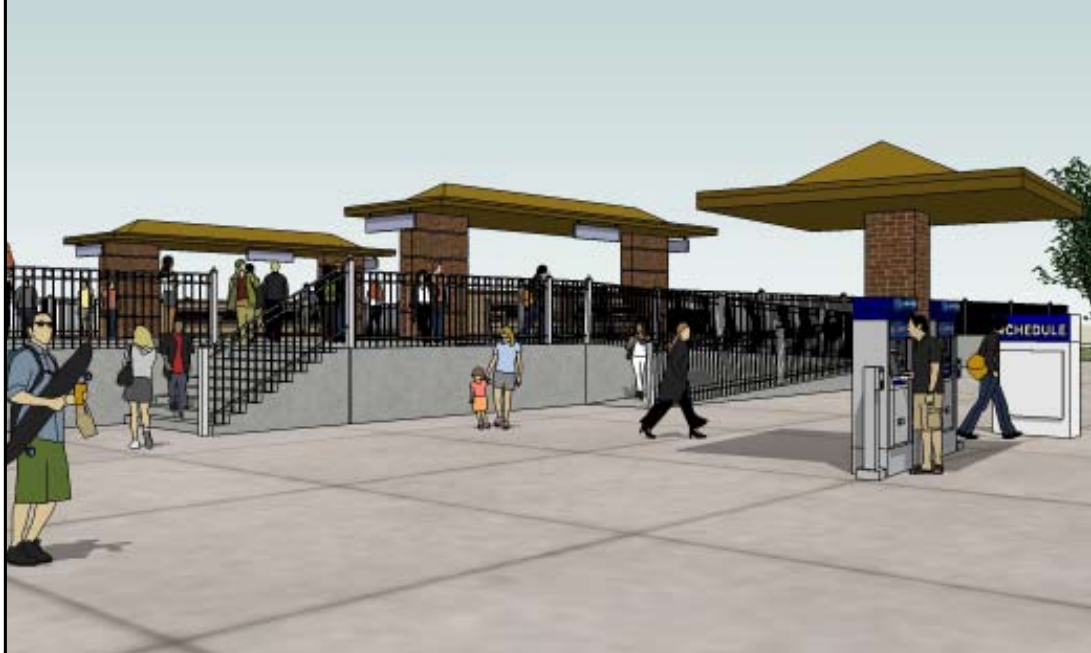



Four station styles have been identified across the FasTracks corridors:
Neighborhood Craftsman, Town Center Contemporary, Main Street Historic and Industrial Loft Modern.

Step 5. Determine Approach to Blending Styles and Character of Corridors



Step 6. Define Architectural Styles

The four station styles:
Neighborhood Craftsman, Town Center Contemporary, Main Street Historic and Industrial Loft Modern.

Typology	Architectural Style	Gold Line Station	Typology
Neighborhood	Neighborhood Craftsman	Sheridan Arvada Ridge	
Main Street	Main Street Historic	Olde Town Arvada	
Town Center	Town Center Contemporary	Federal Ward	
Neighborhood or Commuter	Industrial Loft Modern	41st Avenue Pecos	

Step 7. Costs

Compile cost information for elements and materials for use as a basis for determining the base cost of each station.

Commuter Rail Urban Design Templates

GOLD LINE (Two Creeks) - Station Style utilizing bronze, red brick and river rock

Neighborhood Craftsman

Sheridan
Arvada Ridge



Main Street Historic

Olde Town Arvada

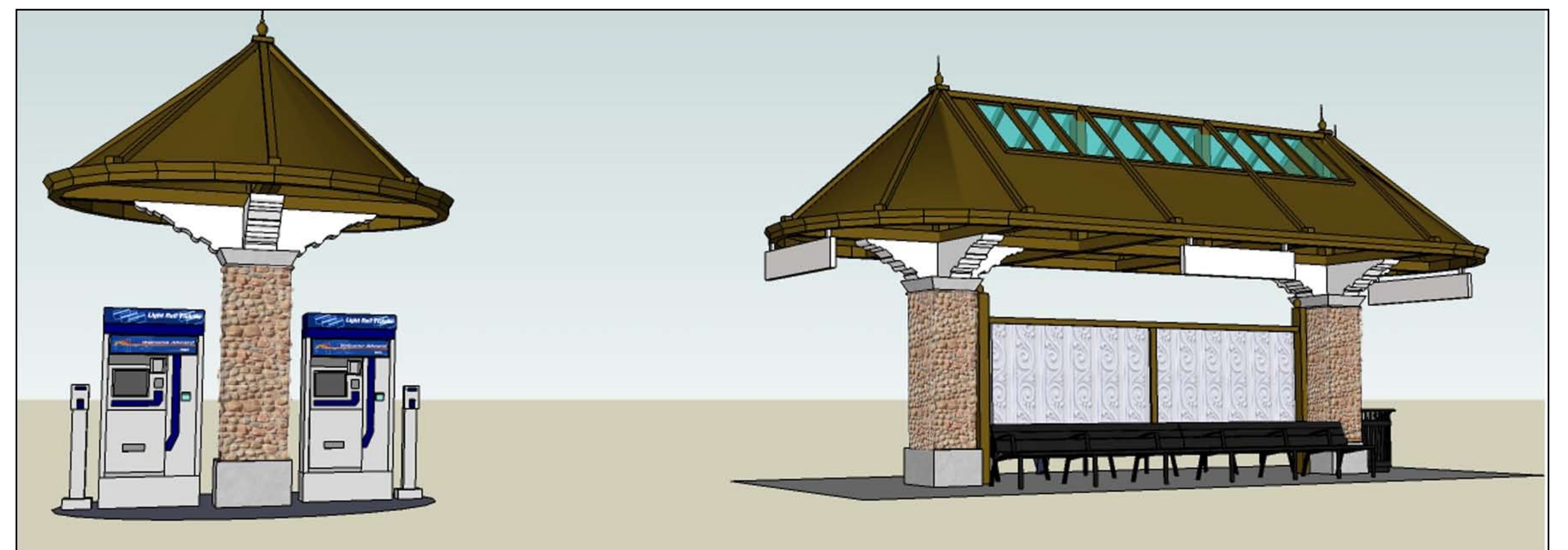
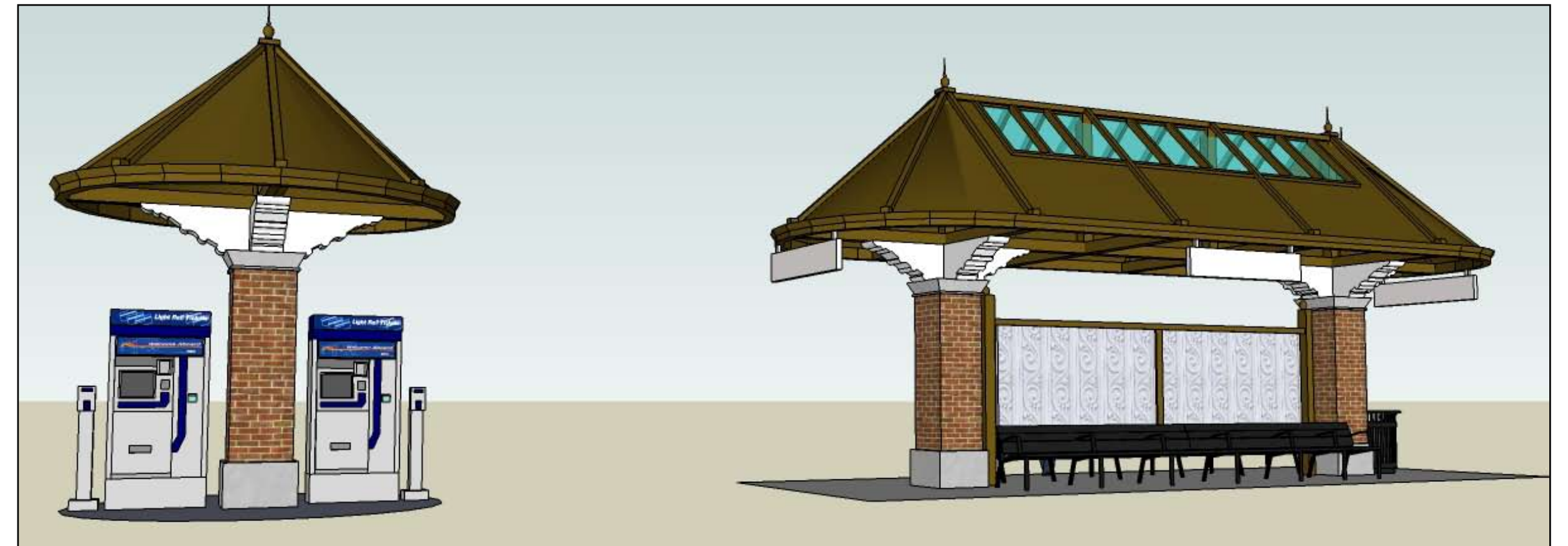


Commuter Rail Urban Design Templates

GOLD LINE (Two Creeks) - Station Style utilizing bronze, red brick and river rock

Town Center Contemporary

Federal Ward



Industrial Loft Modern

41st Avenue Pecos

